



# GEOLOGICAL SOCIETY OF NEVADA NEWSLETTER

Geological Society of Nevada, 2175 Raggio Parkway, Reno, NV 89512  
(775) 323-3500 - Hours Monday -- Friday, 10 a.m. to 5 p.m.  
Website: [www.gsnv.org](http://www.gsnv.org) • E-mail: [gsn@gsnv.org](mailto:gsn@gsnv.org)



SEPTEMBER 2025 ISSUE, Vol. 41, No. 7

Published monthly except June and July

## PRESIDENT

Steven Weiss, Consultant, Geologist  
[siraweiss@outlook.com](mailto:siraweiss@outlook.com)

VICE PRESIDENT, TMCC Emeritus  
David Boden,  
[dboden@tmcc.edu](mailto:dboden@tmcc.edu)

## SECRETARY

Mandy Bengtson, SWCA  
[Mandy.bengtson@swca.com](mailto:Mandy.bengtson@swca.com)

## TREASURER

Robert Kastelic, McEwen Mining  
[bob\\_kastelic@yahoo.com](mailto:bob_kastelic@yahoo.com)

## MEMBERSHIP CHAIR

Christian Thomas, Geologist  
[christianthomasgeo@gmail.com](mailto:christianthomasgeo@gmail.com)

## PUBLICATION CHAIR

Michael Say, Extrados Gold  
[msay@extrados.gold](mailto:msay@extrados.gold)

## DIGITAL MEDIA CO-CHAIRS

Peter O'Byrne, Target Synthesis  
[Peter.Obyrne@outlook.com](mailto:Peter.Obyrne@outlook.com)  
Dakota Prudhomme, Zonge Intl.  
[dakota.prudhomme@zonge.com](mailto:dakota.prudhomme@zonge.com)

GSN EXECUTIVE MANAGER  
Laura Ruud, [gsn@gsnv.org](mailto:gsn@gsnv.org)

## GSN BOARD OF DIRECTORS

Chairman  
David Caldwell

Current GSN President  
Steve Weiss

Most Recent Past GSN President  
Patty Capistrant

Elko Chapter President  
Sergey Konyshv

Winnemucca Chapter President  
Eli Witte

Southern Nevada Chapter President  
Elizabeth MacDonald

Class A, 2024-2027  
Robert Thomas  
John Watson

Class B, 2025-2028  
David Caldwell—CHAIR  
Greg French

Class C, 2023-2026  
David Shaddrick (deceased)  
Mark Travis

## SEPT. 11, 2025 THURSDAY

### GSN WINNEMUCCA CHAPTER

The GSN Winnemucca Chapter meeting will be held at The Martin Hotel, 94 W. Railroad St., Winnemucca, NV. Speaker: Luke Schranz, Senior Project Geologist at Eminent Gold. Talk: "Introducing Eminent Gold's Hot Springs Range Project: Structural Concepts to Drill Core Reality". Drinks at 6 pm, Food at 6:30 pm, Talk at 7 pm. **Sponsor: ENVIROTECH DRILLING.** For more information, please contact Chapter President, Eli Witte at: [witteeli9@gmail.com](mailto:witteeli9@gmail.com). Details on pg. 8

## SEPT. 12, 2025 FRIDAY

### GSN SOUTHERN NEVADA CHAPTER

The GSN Southern Nevada Chapter meeting will be at the Beatty Community Center, 100 A Ave S, Beatty, NV. Time: 6-9 pm. Speaker 1: Carlos Pena, Veracio. Title "Smart Surveying in Mining: Leveraging Gyroscopic Technology for Accurate Boreholes. Speaker 2: Andrew Olson, Layne-IDS. Title: Acoustic/Optical Televiewer Data: Fundamentals of Processing and Applications. **Sponsor: TONATEC.** Drinks and appetizers will be provided. For more information, please contact Southern Nevada President, Liz MacDonald at: [liz\\_macdonald@outlook.com](mailto:liz_macdonald@outlook.com). Details on page 9

## SEPT. 18, 2025 THURSDAY

### GSN ELKO CHAPTER

The GSN Elko Chapter meeting will be held at the Western Folklife Center, 501 Railroad St., Elko. Speaker: Scott Briscoe, Newmont Corp. Title: From Maps to Models: Leveraging Leapfrog Geo for 3D Geological Interpretation and Drill Planning. **Sponsor: SWICK DRILLING.** Please contact Elko President, Sergey Konyshv, [sergey606@gmail.com](mailto:sergey606@gmail.com) for more information. Details on page 10.

## SEPT. 19, 2025 THURSDAY

### GSN MOTHERSHIP MEETING RENO

The GSN meeting will be held at the Atlantis Hotel & Casino, Reno, NV. **SPEAKER:** Peter Dilles, P. Dilles Consulting. **TITLE:** "A Review of Nevada Gold Exploration under Post-mineral Cover since 1983". **Sponsors: BOART LONGYEAR and SRK CONSULTING.** Dinner cost is \$60. **PLEASE RSVP BY 5 PM ON MONDAY, SEPTEMBER 15th.** Please register for dinner online or RSVP at this link: [RSVP/ DINNER](#). Details on pg. 3.

## OCT. 2-4, 2025 SATURDAY

### GSN FALL FIELD TRIP to McGinness Hills and Gold Hill

Details on page 6. Registration Coming Soon via EMAIL! Contact Leader Dave Boden for more information: [dboden@tmcc.edu](mailto:dboden@tmcc.edu)

## GSN SEPTEMBER MEETING SPONSORS



**FROM THE PRESIDENT—AUGUST 2025**  
**Steve Weiss**  
**GSN President June 1, 2025-May 31, 2026**



Members of the Geological Society of Nevada, Greetings and Salutations!

As we approach the end of the summer, I am looking forward with great enthusiasm to the annual re-start of the Geological Society of Nevada's "season" of regular, monthly gatherings in Reno, Elko, Winnemucca and Southern Nevada. I am proud to share with you that GSN is thriving with approximately 1,180 registered members. The previously dormant Southern Nevada Chapter awoke last year from slumber and has roared back to life, kickin' it up in Beatty and Las Vegas under the energetic and creative leadership of Liz MacDonald, Andrew Maendel, Andrew Martin, Matthew Leahy and Dalton Pell. Our GSN Foundation continues to make a positive and growing impact with seven scholarships totaling a record \$43,500 awarded to geoscience students for Fall 2025! Looking to the not-so-distant future, Regina Molloy and Mark Travis are leading the dedicated, all-volunteer charge to organize the 2027 GSN Symposium – Ore Deposits of the Great Basin – Key to America's Mineral Independence. As many of you know, this is a huge undertaking. If you would like to get involved, please reach out to Regina ([chairperson@gsnsymposium.org](mailto:chairperson@gsnsymposium.org)) or Mark ([depcchairperson@gsnsymposium.org](mailto:depcchairperson@gsnsymposium.org)).

The 2025 program of speakers for the monthly meetings in Reno has been scheduled as outlined in the table below. We will commence on the evening of September 19<sup>th</sup> with Peter Dilles sharing his insights in a talk titled "*A Review of Nevada Gold Exploration Under Post-Mineral Cover Since 1983*". GSN greatly appreciates and thanks Boart Longyear and SRK Consulting for co-sponsoring the Social Hour for the September meeting. Please join us!

Date	Speaker	Topic	Affiliation
9/19/2025	Peter Dilles	40+ years of exploration under post-mineral cover in Nevada	Independent
10/17/2025	J. Robert (Bob) Clark	Enzyme leach exploration case study in Nevada	Skyline Assayers
11/21/2025	Adam Kent	Magmatic volatiles, melt inclusions, sulfur degassing	Oregon State Univ.
12/17/2025	TBA	Holiday Party and GSN Foundation Fund-raiser	

I would like to extend a personal note of gratitude to Doug Silver for speaking at the Silver Summer Series on August 7<sup>th</sup>. A special shout-out of thanks to Dan Kappes, KCA and RESPEC for making the evening our premier summer event!

The GSN 2025 Fall Field Trip is coming up on Thursday, October 2 through Saturday, October 4<sup>th</sup>. Please see the announcement on page 6 of this Newsletter and stay tuned for a link to register. Finally, please don't forget to renew your membership. Dues are still \$50 and payable each September. Saludos!

Steve Weiss

**GSN wishes to thank our AUGUST sponsors in  
Reno, Elko & Winnemucca.**



**GUEST SPEAKER: PETER DILLES**

**Peter Dilles Consulting Services Inc.**

**TITLE: “A Review of Nevada Gold Exploration under Post-mineral Cover since 1983”**

**Sponsors: BOART LONGYEAR & SRK CONSULTING**

**TIME: Drinks @ 6:00 pm, Dinner @ 6:30 pm, Talk @ 7:15 pm**

**WHERE: The Atlantis Hotel & Casino, S. Virginia St., Reno**

**Please RSVP for dinner online by September 15th at: [RSVP/DINNER](#)**

**Abstract:**

**A Review of Nevada Gold Exploration under Post-mineral Cover since 1983**

Nevada gold exploration under post-mineral cover became instantly popular in 1984 following the discovery of a bonanza high grade vein at the future Sleeper mine in Humboldt County by AMAX Gold. A profound wave of new covered discoveries immediately followed at the Borealis, Chimney Creek, Marigold mines and other projects sites. By 1987 Santa Fe Pacific had made massive discoveries at what would become the Rabbit Creek and Lone Tree mine sites in Humboldt County. The monstrous Mike deposit was discovered by Newmont soon thereafter on the Carlin Trend in Eureka County. In 1991 the enormous Pipeline deposits were discovered in Crescent Valley east of the old Gold Acres mine by the Cortez joint venture in Lander County. Kennecott Exploration then found a series of modest volcanic hosted deposits near Goldfield and Tonopah in 1993. That same year Homestake Mining discovered the West and East Archimedes deposits followed by additional deeper discoveries in 1994 and 1995 (Achilles and Ruby Deeps) just west of Eureka.

In the late 1990s a wave of major mining company mergers in Nevada coincided with a pronounced slowing of the covered discoveries rate. Significant checkerboard lands fell under the control of either Newmont Mining or Barrick Gold during this period.

In 2002 the massive Cortez Hills deposit was found beneath Miocene volcanic cover on the western flank of Mt. Tenabo by the Cortez joint venture. A Barrick-Goldcorp joint venture discovered the South Arturo deposit (including Button Hill and East Dee) in a series of deeper drill holes on the Dee property in 2005. Following a prolonged drought of significant covered discoveries, Coeur Mining drilled the discovery hole through thick post-mineral ash flow debris into the future Merlin deposit in 2020. AngloGold Ashanti later bought out the Corvus and Coeur properties consolidating the 12+ M oz Au Merlin deposit which is still being expanded.

Most early attempts at covered exploration tended to follow alignment trends from adjoining bedrock deposits into covered shallow bedrock pediments. AMAX Gold, which had been conducting covered copper exploration in the southwestern U.S.A., was well ahead of other groups employing an Induced Polarization geophysical survey to find the Sleeper deposit. A variety of geophysical and geochemical techniques were also employed, most of which proved unsuccessful. The low hanging fruit of proximal, covered exploration targets were pretty well exhausted by the early 1990s.

Exploring beneath post mineral volcanic cover has gained in popularity in Nevada. Gravity surveys are one of the most helpful tools explorers utilize with greater success and frequency. Other advanced techniques include enzyme leach, ground water analysis, soil gas and advanced deep geophysical surveys. Do we sufficiently understand the ages of regional mineralization versus the ages of volcanic rock packages to explore effectively for covered deposits? Accurate age dating of younger rocks is indispensable in covered exploration.

## **FACES OF GSN**

### **Dakota Prudhomme, Reno, Nevada**

Growing up near Colorado Springs, Colorado, I was lucky enough to have the mountains right at my doorstep. The Rockies were my classroom long before I knew what geology meant, and I was lucky enough to grow up with field trips to Red Rocks, Garden of the Gods, and Cave of the Winds, which lit a spark that never went out. Family vacations took us to the mountains or out to the beautiful sandstone formations of Utah/the Colorado Plateau, where the scenery provoked questions I wanted to find the answers to. I found joy in observing how landscapes tell stories written over millions of years, laying the ground for a fantasy-driven passion into discovering Earth's secrets.

When I entered the Colorado School of Mines, I initially thought I was on the path to Electrical Engineering. But after taking an introductory course in geophysics, everything shifted. Suddenly, physics was no longer abstract equations, but rather the art of applying electrical and electromagnetic potential fields and wave concepts to unlock the secrets of the Earth. Volcanoes, earthquakes, and field trips filled the course syllabus, and for me, that was enough to know I'd found my calling. I pursued a B.S. in Geophysical Engineering, blended it with a minor in geology, and followed an area of special interest in space exploration. My undergraduate years became a weaving together of all my passions: the outdoors, rocks, physics, astronomy, and discovering the mystery of how the Earth works.

From there I decided to take some time to find where I fit in best – how to channel my philosophical interest in our planet and human experience into a career pursuit. I moved north to Montana Tech at the University of Montana (Butte, MT), where I earned my M.Sc. in Geosciences. I continued my studies in geophysics but dove deep into geology and hydrogeology as well. My thesis investigated one of Butte's mysteries, overnight sinkholes—a puzzle with no mining shafts or limestone to blame, and no easy answers. Instead, the culprit seemed to indicate a connection to subtle swelling of clays beneath the surface, mapped as conductive responses from FDEM and ERT data and modeling results. That project cemented my love for applied science—literally putting my hands on the Earth and piecing together her stories through geoscience. It also helped that I was having the time of my life living in beautiful Montana, with its vast landscapes and rich mining history. Everyone around me shared my passions, and I knew I had found my first home-away-from home.

After a handful of field technician contracts, Reno called me further west. Since 2019, I've worked with Zonge International, first as a field tech, then as crew chief, and now project geophysicist. So far, this has been a career path that is anything but resistive, charging up my passions and channeling my current focus to better understand each step of the survey from design to data acquisition to modeling. This journey has taught me not only how to run crews and conduct surveys but also how to see the bigger picture: how geophysics supports exploration, discovery, and ultimately our human connection to the Earth. Through thick cover or noisy data, I keep reminding myself—good signals are always there if you filter long enough. I hope to continue growing into a well-rounded geophysicist, geoscience enthusiast, teacher, and possibly even be considered a successful business-woman someday.

This journey has taken me far across the western U.S., to the stunning north (Alaska and Canada), and across continents.. but what I love most are the landscapes themselves: the remote, the forgotten, and the hidden corners of our planet. Few get to tread where we go, and I am endlessly grateful for that privilege. Whether it's a sunrise over the desert, drinking from the clearest waters trickling (cont. on page 5)



Prudhomme, Face of GSN (cont. from page 4)

from a glacier, a Nalgene full of fresh blueberries, or a hot spring bubbling in an unexpected place, I can't help but seek them out. I'm always drawn, like the Great Basin itself, to the spaces between, where things are stretched, rifted, and revealed.

My soulmate, Tesla the electric dog (named after Nikolai Tesla, mind you), has been my biggest joy and partner in crime. She takes her job as Zonge's "top geophysicist" very seriously—running survey lines, supervising crews, and keeping everyone in check. At least, when she's not conducting her own side research on lizards, marmots, and the occasional jackrabbit. I've accepted that one day she might publish her own findings and put the rest of us out of business. Until then, she remains my best co-worker, field assistant, and adventure buddy.

I like to think she reminds me that exploration isn't just a career, it's a way of life.





# Fall Field Trip!



**GSN Fall 2025 Field Trip: October 2 (that's not a mistake, it is Thursday)—October 4:  
McGinness Hills (a tale of two systems) and Gold Hill, NV (the runt of Round Mountain).  
Leaders Dave Boden and Bob Casaceli**

For this fall's field trip, we will visit the McGinness Hills geothermal plant (the largest in Nevada) along with neighboring siliceous sinter and older acid-sulfate style of alteration, possibly overlying a buried porphyry Cu-Mo system. Our next stop will be at Gold Hill, NV to examine mineralization in core (including significant intercepts of siliceous sinter (as much as 35 m thick) and high-grade colloform veins—see picture below), outcrop, and the dormant open pit, where vein textures at both high- and low-structural levels can be observed and compared.

The trip will depart from NBMG's Gold Building promptly at 4 pm (please arrive by 3:30 pm to check in and receive your guidebook) on Thursday, October 2. We will spend that night in Fallon and hear a presentation by Ben Delwiche of Ormat Technology on the McGinness Hills geothermal complex and geology relevant to the plant's operation. Also speaking will be Bob Casaceli who explored the property in the 1980s for Anaconda as a gold prospect, considering it initially as a possible analog to the rich, hot-spring related gold mineralization exploited by the McLaughlin mine in California. *To accommodate the schedule of personnel at the McGinness Hill geothermal plant, we need to leave Fallon by 6:45-7:00 am Friday morning.*

After our visit at McGinness Hills, we then head to Tonopah to spend Friday night and hear a post-dinner presentation by Fallon-born Sara Spirek on Kinross' Gold Hill deposit and what we'll be seeing during our visit on Saturday, October 4.

We then drive back to Reno arriving back at the Gold Building between 6—7 pm Saturday evening. (Watch for Registration in your Inbox soon!)



View looking southwest with Bob Casaceli standing on siliceous sinter and the three geothermal power plants in the background at McGinness Hills, NV.





View looking northwest at west and north walls of Gold Hill pit with Toiyabe Range in the background. Note the post-mineral basin-range fault that drops valley-fill gravels (grey rock) against altered tuff of Mt. Jefferson near right-middle of frame. This is the fault that truncated east-west striking veins mined underground during the 1930s. Bench heights are about 35 feet.



View of core from hole D-1241 at Gold Hill intersecting crustiform and colloform quartz veins located about 250 m below silica sinter. The banded vein near center of core box runs 26.2 g/t and 163 g/t of Au and Ag, respectively.



## **GSN Winnemucca Chapter Meeting**

**Thursday, September 11, 2025**

**Where: the Martin Hotel, 94 W. Railroad St., Winnemucca, NV**

**Time: Drinks @ 6 PM, Food @ 6:30 PM, Talk @ 7 PM**

**Speaker: Luke Schranz, Senior Project Geologist at Eminent Gold**

**Talk: Introducing Eminent Gold's Hot Springs Range Project:  
Structural Concepts to Drill Core Reality**

**Bio:** After graduating from the University of Wisconsin – Madison in the spring of 2017 Luke moved out to Elko, NV working as an underground ore control geologist at the Fire Creek Mine for Klondex Gold and Silver. Beginning in the fall of 2019, Hecla Mining Company, which recently acquired Klondex, sponsored Luke to pursue a masters degree program under John Muntean at UNR. Luke studied the Fire Creek deposit for his thesis and after another stint working underground in 2020, he graduated from UNR in the spring of 2021. Luke then began his contracting career with Eminent Gold Corp being his first long term client. From 2021 to the present Luke has worked primarily as a geologic mapper on systems ranging from Carlin type Au to alkaline REE complexes (and many things in between) in the western USA, Alaska, southeast and central Asia, Oceania, and Greenland.

**Sponsor:**



If you have any questions, feel free to contact me at [ewitte@i80gold.com](mailto:ewitte@i80gold.com)

Can't wait to see you all there!

Eli Witte, Winnemucca Chapter President





**Please join us in Beatty, Nevada this month!**

**When: Friday, September 12<sup>th</sup>**

**Time: 6-9 PM, drinks and appetizers are provided**

**Where: Beatty Community Center (100 A Ave S, Beatty, NV 89003)**

**(<https://maps.app.goo.gl/LC1ZBRP4P1aEhmAH8>)**

**Sponsor: TonaTec (<https://www.tonatec.com/>)**

**Our talk this month will be divided into two halves:**

**Part I: Smart Surveying in Mining: Leveraging Gyroscopic Technology for Accurate Boreholes**

**Speaker: Carlos Pena**

**Biography:** Carlos Pena is the Global Technical Support Manager at Veracio. With a strong background in drilling technologies, Carlos brings experience from both the mining and oil & gas sectors. He specializes in borehole surveying and the application of gyroscopic tools.

**Abstract:** This presentation will address the collection of open hole televiewer data, the basic processing steps performed after data collection, and how to interpret/use the data across various geological environments. Collecting and understanding open-hole geophysical data is becoming increasingly important in complex ore deposits. We will discuss practical examples of how televiewers can be used in real world applications, and cover the current limitations and common issues.

**Part II: Acoustic/Optical Televiewer Data: Fundamentals of Processing and Applications**

**Speaker: Andrew Olson**

**Biography:** Andrew Olson is the Chief Geophysical Consultant for Layne-IDS. Andrew is a geologist with experience in various geological ore deposits including porphyry systems, skarn deposits, and Carlin-type gold. He has been involved in collecting and interpreting geophysical data for 15+ years.

**Abstract:** This presentation highlights the importance of borehole surveying. We will focus on gyroscopic tools due to their prevalence in the industry and their reliability in magnetically disturbed environments. We'll explore the differences and limitations of using rate gyros, north-seeking gyros, and hybrid systems. An overview of best practices and how to mitigate common survey issues will be covered. Finally, we'll look at how survey data is processed using standard borehole trajectory calculation methods.





## GSN ELKO CHAPTER NEWS



**The GSN Elko Chapter invites you to their September meeting!**

**Thursday, September 18, 2025**

**Western Folklife Center, 501 Railroad St., Elko, NV**

**Food and Drinks @ 6 p.m.**

**Speaker: Scott Briscoe, Newmont Corporation**

**Title: From Maps to Models: Leveraging Leapfrog Geo for 3D Geological Interpretation and Drill Planning**

**FOOD & BEER SPONSOR:**



Abstract:

Building effective drill programs begins with a clear understanding of geology in three dimensions. This talk demonstrates practical techniques in Leapfrog Geo for transforming open-source geological maps into robust 3D models that guide drill testing. Structural measurements, lithological contacts, fault geometries, and mapped veins are integrated to create dynamic interpretations that evolve with new data. The workflow highlights how rapid visualization and implicit modeling can refine geological concepts, identify key controls, and reduce uncertainty before drilling begins. By bridging surface mapping with subsurface prediction, Leapfrog Geo provides a powerful framework for targeting and decision-making in mineral exploration.

Please contact Elko Chapter President, Sergey Konyshov if you have any questions. [Sergey606@gmail.com](mailto:Sergey606@gmail.com)



## NEWS FROM THE FOUNDATION

September, 2025  
Bob Felder



**MARK YOUR CALENDARS!!** The GSN Foundation annual holiday party and fundraiser is scheduled for Wednesday, December 17 once again at the Atlantis. Always a fun evening, please plan to attend.

Be on the lookout for the first ever **Foundation Newsletter**, which should be arriving in your email inbox in the coming days.

## **GSN Membership Renewal Notice!**

**Renew by October 1, 2025** to continue receiving the benefits of the Geological Society of Nevada membership. Dues can be paid online by clicking this link and logging in to your account (see “My Account” under the Membership tab): <https://www.gsnv.org/my-account/>.

(Checks can be mailed to GSN, 2175 Raggio Pkwy, Reno NV 89512 if you’re old school. ☺ )

### **Membership Levels include:**

- \$25/year for student members
- \$50/year for regular members (*online newsletter option*)
- \$110/year for regular members (*printed newsletter in the mail option*)
- \$1,250/one-time-payment for a LIFETIME membership (*you will have “scoffing” rights toward those that continue the “annual-renewal-hustle”*)

### **Membership benefits include:**

- Monthly membership meetings
- Fall and Spring field trip opportunities
- Access to the GSN Membership Directory with ~1,200 contacts from throughout the mining industry
- Updates on job opportunities, education and safety courses, and other information pertaining to the mining and exploration industry of the Western Cordillera
- Networking opportunities throughout the year in Reno, Elko, Winnemucca, and Beatty





# Mining Activity Update

JULY 2025, Mike Brady

[LMBrady@aol.com](mailto:LMBrady@aol.com)

## NEVADA

Anglo Gold Ashanti Ltd. announced that it offered to acquire Augusta Gold Corp. for \$1.70/share or a total value of \$152,000,000. (resource @ Bullfrog = 71,010,000 tonnes @ 0.53 gpt Au measured+indicated) *Press Release: July 16*

Pathfinder Tonopah Mining Co. (private) announced that it received a "letter of intent" from the Export-Import Bank of the US to loan it \$896,000,000 to support the development of the Tonopah Cu+Mo Project. (reserve = 490,900,000 tonnes @ 0.08% Cu, 0.065% Mo proven+probable) *E/MJ: June 2025*

Scorpio Gold Corp. announced that it sold its Mineral Ridge Property to an undisclosed purchaser for \$7,500,000 cash over 1 year. (resource = 2,893,000 tonnes @ 2.46 gpt Au measured+indicated) *Press Release: July 24*

Ridgeline Minerals Corp. announced that recent drill results at the Big Blue Project include 675.7-676.3 meters @ 0.7% Cu, 3,194 gpt Ag (BB25-3). *Press Release: July 3*

Franco-Nevada Corp. announced that it acquired a 1.0% NSR on the Authur Project (was Silicon) from Altius Minerals Corp. for \$250,000,000

cash. (resource @ Silicon = 121,560,000 tonnes @ 0.87 gpt Au indicated) *Press Release: July 23*

Sun Silver Ltd. announced that continued re-assay of previous drill holes at the Maverick Springs Project yielded 160.9-226.8 meters @ 0.12% Sb (MR65); 125.6-238.4 meters @ 0.04% Sb (MR69) and 214.9-255.4 meters @ 0.04% Sb (MR98). (resource @ Maverick Springs = 218,500,000 tonnes @ 0.31 gpt Au, 42.2 gpt Ag inferred) *Press Release: July 16*

Blackrock Silver Corp. announced that recent drill results at the Tonopah West Project include 393.04-403.16 meters @ 288.2 gpt Ag, 2.04 gpt Au (TXC25-144); 351.13-353.45 meters @ 241.8 gpt Ag, 1.76 gpt Au (TXC25-145); 439.37-445.1 meters @ 95.8 gpt Ag, 0.67 gpt Au (TXC25-153) and 413.86-414.83 meters @ 109.7 gpt Ag, 0.98 gpt Au (TXC25-155). (resource = 6,119,000 tonnes @ 2.9 gpt Au, 242.6 gpt Ag inferred) *Press Release: July 8*

OceanaGold Corp. announced that it acquired an option to earn a 65% interest in the TJ, Jake Creek and Hot Creek properties from Headwater Gold Inc. for \$40,000,000 in exploration expenditures over 8 years. *Press Release: July 22*

## Nevada Mineral Exploration Coalition (NMEC)

### 2025 Great Basin Rendezvous

September 5<sup>th</sup> through 7<sup>th</sup>, 2025

For 2024 twelfth Great Basin Rendezvous (GBR), is returning to beautiful Camp Lamoille! Come join your fellow geologists, drillers, consultants, and their families.

Breakfast and dinner are included in the price. Friday night dinner provided by Envirotech Drilling, Saturday breakfast by Falcon Drilling, Saturday night dinner by Steve Neilsen, and Sunday breakfast by WestLand Engineering & Environmental Services.

**TO HELP SPONSOR THE GREAT BASIN RENDEZVOUS, [Click Here](#)**

**TO REGISTER FOR THE GREAT BASIN RENDEZVOUS [CLICK HERE](#)**

**For more information about the Rendezvous or the camp contact Warren Thompson at: [wfthompson@frontiernet.net](mailto:wfthompson@frontiernet.net) or JoAnn Newbury at: [jnewbury.consulting@yahoo.com](mailto:jnewbury.consulting@yahoo.com)**

## SILVER SERIES THANK YOUS!

The GSN would like to give a big shout out to **Dan Kappes and Kappes, Cassiday and Associates** for his GENEROUS sponsorship of the 23rd Annual Summer Silver Series on August 7th. We'd also like to thank the crew at **RESPEC** for sponsoring the kegs of Great Basin beer (and hauling it over for us!). Of course we need to thank Doug Silver for paying his own way to Reno AGAIN to give the talk, and taking the time to put the slides together. Please contact Laura Ruud at the GSN office if you'd like a copy of Doug's slides!



**SAVE THE DATE!**



**FOR THE 6TH ANNUAL**

**BRIAN MORRIS TRAP SHOOT FUNDRAISER!**

**SATURDAY, NOVEMBER 1, 2025**

**Winnemucca Trap Club**

**Get your 2-Buddy teams together now!**

**INFORMATION & Registration will be sent via email  
and in the October newsletter.**

**If you'd like to donate to Brian's Scholarship Fund now, please  
click here: <https://www.gsnv.org/donation-form/>**

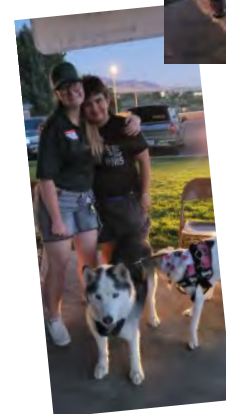
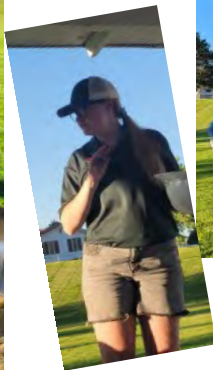
## GSN Winnemucca Picnic in the Park – August 14, 2025

This was a great start to another year for the Winnemucca GSN!

Big thank yous to Boart Longyear and ALS Geochemistry for supporting us by sponsoring the dinner and drinks, and to the Martin Hotel for a delicious meal. The Winnemucca GSN kicked off the new season with a great picnic. We had great food, great drinks, and of course, cornhole competitions! The new venue of Pioneer park worked out great too. Thank you to the Winnemucca Officers for putting this BBQ together for anyone who had the ability to attend.



right solutions.  
right partner.





## GSN Elko Picnic in the Park – August 21, 2025

The Elko Chapter wrapped up their summer BBQ season with their 3rd one at Elko's Main City Park. The event was hosted by Rangefront Mining Services and the food they cooked for us was really good! And of course they are always such a nice group of people who work hard to set everything up so we can enjoy the evening. As always, Stefan Beck provided music in the park for the attendees. He even had a couple of guest piano players for the crowd to enjoy.



## One-Day GSN Field Trip Wrap-Up

**“Understanding the Geology of Peavine, Washoe County, NV”, led by Dr. Donald Hudson was held on Saturday, August 23, 2025.** We had a great turn out with 32 enthusiastic geologists attending. The geologic tour spent about an hour and half looking at the outcrops around the GSN’s gold building, then headed over to the Wedekind and Peavine districts at the north end of Reno, NV above Evans Creek. After a vigorous hike, the tour ended a little early due to the heat but everyone had a good time and learned a lot about our local geology from our local expert!

A big thank-you to Patty Capistrant who organized the trip, and of course to Dr. Donald Hudson for putting in his valuable time on organizing the stops, leading the trip, and preparing a very informative, 15-page handout. THANK YOU!!



## 2027 GSN Symposium (27GSNS)

**Symposium Event Dates:**

**Thursday 22 April to Saturday 1 May 2027**

**Location: The Nugget Casino, Reno Nevada**

**Theme: Ore Deposits of the Great Basin –  
Key to America’s Mineral Independence**

**Call for Abstracts Coming Soon!**

**Please contact Symposium Chair, Regina Molloy**

**[chairperson@gsnsymposium.org](mailto:chairperson@gsnsymposium.org)**





## OTHER UPCOMING EVENTS

**September 2, 2025 Arizona Geological Society Speaker Series 2025** in person or online. Hexagon Mining, 40 E. Congress, Ste 150, Tucson, AZ. Social 5:30 pm, Talk begins at 6:35 pm. Speaker: Lisa A. Thompson, , AZ Geological Survey. Title: "Geology, Geochemistry, and Potential Origins of the Basin volcano-sedimentary lithium deposit, Kaiser Spring volcanic field, Arizona.

Livestream URL: [Join the meeting now](#); Meeting ID: 397 466 345 275 1; **Passcode:** Gu2Db7KZ  
In-person registration here: <https://www.arizonageologicalsoc.org/event-6287889>

**September 4, 2025: Nevada Petroleum & Geothermal Society meeting.** Tamarack Junction, Reno, NV. 6:30 pm. Theme: "Back to School". **Research Updates and Scholarship Awards**  
The student presenters are: Ian Adams, Nada Mareechi Jacinto, & Nicole Wagoner. Visit their events page to register: [NPGS](#)

**September 6, 2025: 38th Annual National Mining Hall of Fame Induction Gala**, National Mining Hall of Fame & Museum, 120 W 9th St., Leadville, CO 80416.. Click here to buy tickets and for more information: [NMHFGALA](#)

**September 11, 2025: Utah Geological Association.** SPE/UGA/SME Annual Ralph Goodell Memorial 2025 SCHOLARSHIP GOLF TOURNAMENT Stonebridge Golf Club, West Valley City, UT. More info here: <https://utahgeology.org/events/spe-uga-sme-annual-ralph-goodell-memorial-2025-scholarship-golf-tournament-2>

**September 12-13, 2025: Denver Region Exploration Geologist' Society DREGS co-sponsoring the Denver Mineral Exploration Symposium.** More information can be found on the DREGS website: <https://www.dregsgeology.com/> or REGISTER at <https://www.explorationsymposium.com/>

**May 19, 2025 (tentative): Northern NV SME Meeting**, Circus Circus Hotel, Mandalay Room, Reno, NV. Speaker and topic to be announced. [RSVP](#)

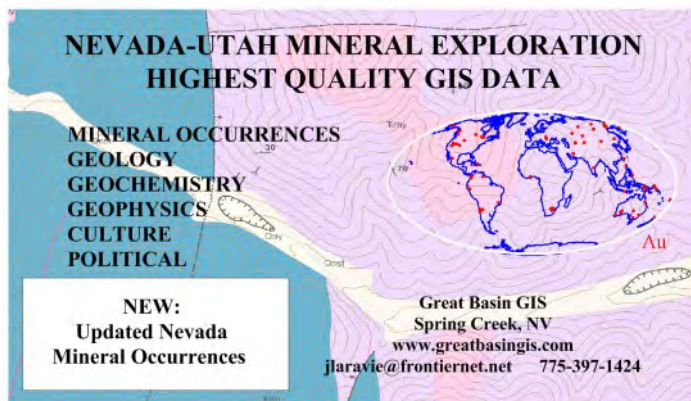
**September 23-27, 2025:** Assoc. of Environmental & Engineering Geology (AEG) 68th Annual Meeting. Westin Chicago River North, Chicago IL. <https://www.aegannualmeeting.org/>

## PAID ADVERTISEMENTS



210 SOUTH ROCK BLVD.  
RENO, NEVADA 89523

**MINERAL RESOURCES & RESERVES**  
Reno, Nevada, USA  
775-856-5700  
TECHNICAL REPORTING: NI43-101 // S-K1300 // JORC



**NEVADA-UTAH MINERAL EXPLORATION  
HIGHEST QUALITY GIS DATA**

MINERAL OCCURRENCES  
GEOLOGY  
GEOCHEMISTRY  
GEOPHYSICS  
CULTURE  
POLITICAL

**NEW:  
Updated Nevada  
Mineral Occurrences**

Great Basin GIS  
Spring Creek, NV  
[www.greatbasingis.com](http://www.greatbasingis.com)  
[jlavie@frontiernet.net](mailto:jlavie@frontiernet.net) 775-397-1424





Structure, Tectonics, Basin Analysis

**John S. Oldow, Ph.D.**

200 East Troxell Road  
Oak Harbor, Washington 98277  
360-675-0461 (land)  
jsoldow@gmail.com  
www.borealisgeosciences.com

hardrockwheels@yahoo.com



**HARD ROCK WHEELS, INC.**  
4WD Pickup Rentals

Howard J. Adams  
14756 Pine Knolls Ln.  
Reno, Nevada 89521  
(775) 852-2622  
Fax (775) 852-2075

Taiga Ventures  
2700 S. Cushman St.  
Fairbanks, AK 99701  
(907) 452-6631



**GeoSequel LLC**  
Geologic Database Management

sales@geosequel.com  
(775) 742-2895

ORGANIZING SAMPLES  
DRILL TO MILL



**NORTH AMERICAN EXPLORATION**

GEOLOGY • CLAIM STAKING • GEOCHEM SAMPLING • LANDWORK



**DAVID MORRIS**  
PRESIDENT • GEOLOGIST

895 N. MARSHALL WAY, SUITE A  
LAYTON, UT 84041

801.546.6453  
DMORRIS@NAE-EXPLORATION.COM

**ADVANCED GEOSCIENCE, INC.**



Reno Office (775) 204-4740  
Los Angeles (310) 378-7480  
Please Visit Our Website:  
www.AdvancedGeoscience.com

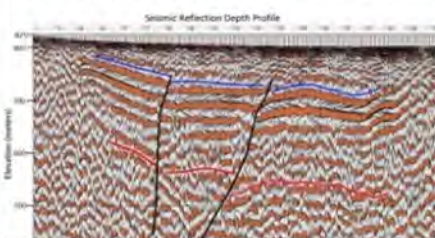


**Geophysical Exploration Services**

Seismic Reflection Data Recording, Processing, and Interpretation  
Seismic Refraction Tomography for Alluvium/Bedrock Profiling  
Gravity and Magnetics for Basin Depth and Mineral Exploration  
Electrical Resistivity Profiling— Deeper Transient EM and 2D ERT

**Geophysics for Geotechnical and Environmental Investigations**

Ground-Penetrating Radar  
Seismic Reflection for Fault and Geo Hazard Investigations  
Seismic Refraction P-Wave and MASW S-Wave Velocity Profiling  
Electrical Resistivity Surveys for Groundwater Investigations  
Geophysical Evaluation for Earth Structures- Dams and Tunnels



For Free Evaluation of  
Geophysical Applications  
Please Contact:

Mark Olson  
Principal Geophysicist  
California PGp, PG, CHG

Mobile Telephone:  
(310) 617-8420

Email:  
mgolson@  
AdvancedGeoscience.com

- Claim Staking
- Soil & Rock Sampling
- Geologic Mapping
- Drill Planning & Management
- Core Logging
- Technical Reporting



**Global Geologica  
USA Services**

**Contact Us:**

sgrocke@globalgeologica.com.au  
info@globalgeologica.com.au  
+1 440.725.4144  
Stephanie Grocke, President

globalgeologica.com.au  
Global Geologica  
@globalgeologica  
Global Geologica



**Darrell Tweidt**  
cell: 775-397-0963

darrell@premierdrilling.com

**James A. Stephens**  
cell: 480-200-8300

james@premierdrilling.com

www.premierdrilling.com



## THE INDUSTRY STANDARD FOR CORE STORAGE

### CORE BOXES

HQ | NQ | PQ

*Setting the industry standard in  
core box solutions and reliable service.*

### CORE-BLOX

*Custom wooden core markers.*

### NEW COREBOX COVERS

*Protect your investment from the elements.  
Ask us about our custom corebox covers.*



LOCATIONS | SONORA MEXICO | IDAHO | NEVADA

**HOT-SHOT  
DELIVERY  
SERVICES  
AVAILABLE**

**COREBOX.COM**  
TO ORDER CALL: 208.762.1376



### Carlin Trend Mining Supplies & Service

369 - 5<sup>th</sup> Street, Elko, Nevada 89801  
775.778.0668 www.carlin-trend.com

Claim Staking - Soil Sampling - Land Research  
Core Cutting - Mine Hazard Fencing - Reclamation  
Project Management - Geological Consulting  
Geology & Drafting Supplies - AutoCad & GIS

Temporary Employees in All Fields  
Sister store located in Superior, Arizona  
Copper Triangle Mining Services 520-689-5200



## WAYFINDER — DRILLING —

- Lightweight man-portable HYDRACORE diamond drill rigs.
- Access hard-to-reach sites with minimal environmental impact.
- More than 1 million feet drilled across the USA and Mexico.

Nevada Contractor's License: 0092752

Contact: Heather Kidd (604) 629-9427 [hkidd@almadexminerals.com](mailto:hkidd@almadexminerals.com)  
Korm Trieu (604) 629-9426 [ktrieu@almadexminerals.com](mailto:ktrieu@almadexminerals.com)

[www.wayfinderdrilling.com](http://www.wayfinderdrilling.com)

**DGI**  
GEOSCIENCE

**Our Passion Goes Deep**

DGI is leading innovation in wireline surveying  
and geological interpretation services.

**DIGITAL ORIENTED CORE  
GEOTECHNICAL  
GEOPHYSICS  
HYDROGEOLOGY**

Explore our subsurface solutions today.  
**[dgi.geoscience.com](http://dgi.geoscience.com)**



4" and 4.5" RC Rod

**PX series**  
Exploration Tooling

**RC Hammers**

**Digout Subs**

**PARAGON DRILLING SUPPLIES**  
DIAMOND SERVICE TO THE CORE  
**187-750-DRILL**  
[www.paragondrilling.ca](http://www.paragondrilling.ca)  
Garth Patterson  
775 481 6599 - Garth@paragondrilling.ca

**PARASONIC**

8" Parasonic Casing and Shoe

7" Parasonic Casing and Shoe

6" Parasonic Casing and Shoe

3.5" Parasonic Drill Rod    4.75" Parasonic Core Barrel

Cell: +1-775-720-8894

**Donald G. Strachan**  
*Geologist M.S. CPG QP*  
Economic Geology and Hydrogeology  
Mining - Exploration and Development

**Mineral Consulting**  
**Geologic Mapping**  
**Geochemical Surveys**  
**Discovery Drill Programs**  
**Deposit Development**  
**Project Management**  
**Resource Planning**

[www.geostrachan.com](http://www.geostrachan.com)  
[dgstrachan@yahoo.com](mailto:dgstrachan@yahoo.com)  
Post Office Box 4046, Carson City, Nevada 89702





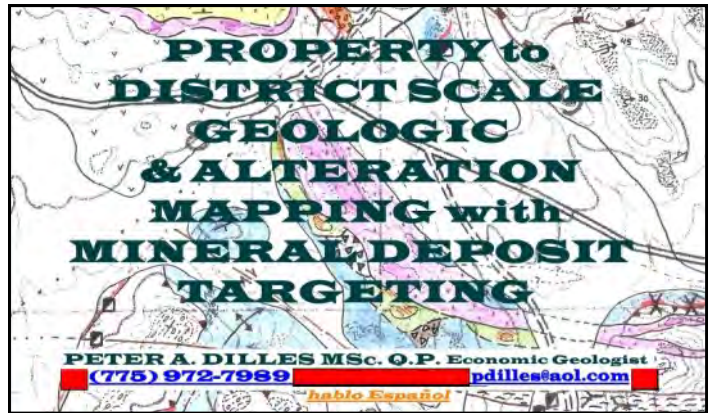
**MOUNTAIN STATES**  
MINE DEVELOPMENT  
& RECLAMATION

- Road Building and Maintenance
- Reclamation and Reseeding
- Earthwork
- Drill Pads
- Water Hauling

Also Offer  
Trucking and  
Heavy Haul  
Services

Office: 208-800-7366  
Mobile: 775-397-8368  
Email: [jd@mountainstatesmdr.com](mailto:jd@mountainstatesmdr.com)  
[mountainstatesmdr.com](http://mountainstatesmdr.com)

NV Contractor Lic. # 0090260  
ID Contractor Lic. # RCE-50661  
AZ Contractor Lic. # ROC 351296  
UT Contractor Lic. #13893913-5501  
OR Contractor Lic. #250071



**PROPERTY to  
DISTRICT SCALE  
GEOLOGIC  
& ALTERATION  
MAPPING with  
MINERAL DEPOSIT  
TARGETING**

**PETER A. DILLES MSc. Q.P. Economic Geologist**  
**(775) 972-7989** [pdilles@aol.com](mailto:pdilles@aol.com)  
*hablo Español*

## Big Sky Geophysics

Clark Jorgensen, M.Sc.  
Geophysicist

*Field Work  
Processing  
Interpretations*

P.O. Box 353  
Bozeman, Montana 59771  
USA

Phone/Fax +1 (406) 587-6330  
Mobile +1 (406) 580-9718  
[clark@bigskygeo.com](mailto:clark@bigskygeo.com)

**For more details, my background, and case studies,  
Visit my webpage at [www.bigskygeo.com](http://www.bigskygeo.com)**

# BUREAU VERITAS MINERALS

## ANALYTICAL LABORATORY SERVICES FOR THE EXPLORATION & MINING INDUSTRIES

- Onsite Laboratories
- Assaying and Geochemical Analysis
- Spectral Services
- \$6M Investment into New State-of-the-art equipment
- Trade/high grade service out of Reno NV
- New facility Sparks NV
- New facility in Fairbanks AK - Largest Prep Lab in AK

[BVClientServicesNevada@bureauveritas.com](mailto:BVClientServicesNevada@bureauveritas.com)  
605 Boxington Way, Suite 110 Sparks, NV 89434  
[www.bvna.com/metals-minerals](http://www.bvna.com/metals-minerals)

ELKO	+1 775-778-5684	JUNEAU	+1 907-750-1734
FAIRBANKS	+1 775-296-0631	SPARKS	+1 775-359-6311






## JBA WORKS, INC.

Jo Beth Allen  
Geologist

### Professional Map & Data Graphics

GIS / CAD Drafting  
Technical Presentations & Graphic Design

Phone: 775-303-6818

JoBethAllen@sbcglobal.net

## TOM CARPENTER

### CONSULTING GEOPHYSICIST

5445 Goldenrod Drive  
Reno NV 89511  
(o) 775.849.9707  
(e) tcarpenter@gbis.com



*Serving Mining in Nevada Since 1992*

### General Engineering Contractor

Drill Pads  
Road Building  
Reclamation  
Earthwork

Office: 775-753-5832

Mobile: 775-934-1837

[www.legarza.com](http://www.legarza.com)

NV License #84449

**RANGEFRONT**

# MINING & EXPLORATION GEOLOGICAL SERVICES

SERVING IN ALASKA, CANADA, AND WESTERN U.S.



#### CONTRACT GEOLOGY

- Geologists
- Geo Technicians
- Contract Labor
- Contract to Hire
- Direct Hire



#### FIELD SERVICES

- Geophysics
- Claim Staking
- Soil Sampling
- Annual Filing
- Cartography
- AML Hazard Fencing



#### TECHNICAL SERVICES

- 3D Geologic Modeling
- Data Management & Hosting
- Exploration Analysis & Targeting
- NI 43-101 Reports
- And More!



#### TRUCK RENTALS

- Mine Site Ready
- Exploration
- Field Work

**CALL 775.753.6605 FOR A FREE ESTIMATE ON YOUR NEXT PROJECT**  
[WWW.RANGEFRONT.COM](http://WWW.RANGEFRONT.COM)





## Geochemical & Environmental Analysis

(775) 356-0606 PHONE  
(775) 356-1413 FAX  
info@aallabs.com EMAIL

1506 Glendale Ave.  
Sparks, NV 89431  
www.aallabs.com

### FULL SERVICE

- Sample Pick-up
- Core & Prep Services
- Fire Assay
- ICP-OES +MS
- XRF, XRD, SEM
- CIC, C&S, DMA

## EGC Ellis Geophysical Consulting

GIS Data Integration & Interpretation  
Survey Design, Quality Control & Processing

Robert B. Ellis, *Geophysicist*

California Registered Geophysicist, GP-1048  
Wyoming Professional Geologist, PG-2683

- Over 50 years of experience in mineral exploration geophysics
- 27 years as an independent geophysical consultant
- Experience in sediment- and volcanic-hosted and epithermal gold, porphyry copper, skarn, kimberlite, and carbonatite systems



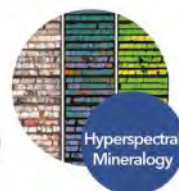
Based in Reno, Nevada  
bellisegc@gmail.com  
775-338-2211

## Leading Provider of Analytical Geochemistry Services



right solutions.  
right partner.

via an integrated global network of laboratories delivering trusted results and exceptional client service.



ALS Geochemistry App  
Track your samples in real time



ClientServicesUSA@alsglobal.com • +1 775 356 5395

alsglobal.com/geochemistry

## GEOLOGICAL SOCIETY OF NEVADA



gsn@gsnv.org • www.gsnv.org  
Telephone (775) 323-3500  
Fax (775) 323-3599  
2175 Raggio Parkway, Room 107  
Reno, NV 89512 USA

### GSN NEWSLETTER AD PRICES per issue

Business Card size (3 ½ X 2") = \$50.00

Quarter Page (3 ½ X 4 ¾") = \$150.00

Half Page (4 ¾ X 7 ½") = \$300.00

Full Page (7.5" X 10") = \$450.00

### GSN TRAVELLING BACKPACK PICTURES

If you have a photo of your GSN Symposium backpack travelling with you to ANYWHERE, feel free to take a photo of it (with you in it or not) and email it to gsn@gsnv.org and we'll run your photo in this space.