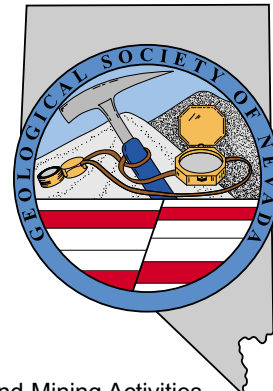


# GSN NEWSLETTER



October 2004, Vol. 18, No. 8

## PRESIDENT

**Dieter Krewedl**  
Krewedl Mineral Exploration  
dkrewedl@usamedia.tv

## VICE PRESIDENT

**Vic Ridgley**  
Consultant  
vicr@gbis.com

## SECRETARY

**Leslie Olmstead**  
Nevada Contact Inc.  
l olmstead@nevadacontact.com

## TREASURER

**Camille Prenn**  
Mine Development Associates  
cami@mda.com

## MEMBERSHIP CO-CHAIRS

**Greg McN. French**  
Consulting Geologist  
GMcNFrench@aol.com

## Dave Shaddrick

Rubicon Resources Inc.  
Dshaddrick@aol.com

## PUBLICATION CO-CHAIRS

**Elizabeth A. Zbinden**  
Round Mountain Gold Corp.  
E\_Zbinden@geology.reno.nv.us

## Ruth Carraher

C&M Consultants  
RACarraher@aol.com

## OFFICE MANAGER

**Shannon Fitzpatrick**  
gsn@mines.unr.edu

## CALENDAR OF EVENTS

**Oct. 1<sup>st</sup>-3<sup>rd</sup>** GSN FALL FIELD TRIP. "New Discoveries, Exploration and Mining Activities along the Central and Southern Battle Mountain-Eureka Trend." This very popular field trip is at capacity.

**Oct. 10<sup>th</sup> Sunday** GSN 16<sup>th</sup> ANNUAL PICNIC: Rancho San Rafael Park. Sunday, Oct. 10<sup>th</sup>, 12 pm – 5 pm at the HIGHLAND PAVILION at Rancho San Rafael. Price is \$5 per person, \$10 per family, for meat, beer, soft drinks - bring a salad, side dish, or dessert to share. Contact Shannon at the GSN office at 775/323-3500 or gsn@mines.unr.edu. See page 2 for more information.

**Oct. 15<sup>th</sup> Friday** GSN Membership Meeting: Reno Elks Lodge, Reno, NV. Speaker: Leroy Schutz, "Geologists Add Value at Newmont's Nevada Mines." Social hour at 6 pm, dinner at 7 pm and talk at 8 pm. Please contact Shannon Fitzpatrick for dinner reservations at 775/323-3500 or gsn@mines.unr.edu.

➔ **PLEASE NOTE: Due to a scheduling conflict with Elks Lodge the November meeting date has been changed to Wednesday, November 10<sup>th</sup>.**

**Nov. 10<sup>th</sup> Wednesday** GSN MEMBERSHIP MEETING: Reno Elks Lodge, Reno, NV, Speaker: Bob Leonardson, "Back to Basics at Goldstrike." Social hour at 6 pm, dinner at 7 pm and talk at 8 pm. Contact Shannon Fitzpatrick for dinner reservations at 775/323-3500 or gsn@mines.unr.edu.

GSN Newsletter is published monthly except June and July  
Geological Society of Nevada, PO Box 13375, Reno, NV 89507 USA, 775/323-3500, www.gsnv.org

## FROM THE PRESIDENT

Dieter Krewedl, *GSN President 2004-2005*

October will be a busy month for the GSN. Significant events include the GSN Fall field trip along the central and southern Battle Mountain–Eureka trend from October 1<sup>st</sup> to the 3<sup>rd</sup> followed by the annual GSN picnic on Sunday, October 10<sup>th</sup> and the first GSN membership dinner meeting of the year on Friday, October 15<sup>th</sup>.

As expected, the GSN Fall field trip has generated a lot of interest. We will not only be visiting the new discoveries at Cortez Hills/Pediment and the proposed pit expansion of the Archimedes deposit, but also will be given field presentations by junior exploration companies actively working along the central and southern Battle Mountain-Eureka trend. Participation in the field trip was capped at 76 people. The enthusiastic interest in this field trip demonstrates that gold exploration is alive and well in Nevada. The field trip is also receiving generous support from the following companies: **Agnico-Eagle Mines, American Assay Labs, ALS Chemex, BSi Inspectorate, Eklund Drilling and O'Keefe Drilling.** We are fortunate to have these sponsors, who help defray costs and make this trip affordable for everyone.

The 16<sup>th</sup> GSN annual picnic will be held on Sunday, October 10 at Rancho San Rafael Park in the Highland pavilion from 12 - 5 pm. The event is being organized by D.D. LaPointe and the GSN Education Committee. It should be a fun event for the entire family.

*continued on page 2*

## October Sponsor



# Eklund Drilling Company, Inc.

### IN ELKO

605 Union Pacific Way  
Elko, NV 89803  
(775) 738-1980  
Fax (775) 753-9229

### IN RENO

100 W. Liberty St. Ste 900  
Reno, NV 89501  
(775) 324-7730  
Fax (775) 322-6644



## News and Announcements

### FROM THE PRESIDENT *continued from page 1*

The speaker for the first membership dinner meeting on October 15<sup>th</sup> will be **Leroy Schutz**, Director of Newmont's Nevada Exploration and Mine Geology Department. His topic will be "Geologists Add Value at Newmont's Nevada Gold Mines." Leroy will discuss how Newmont's Nevada mine geologists have developed over 43 million ounces of gold reserves since 1986. He is also the co-author of the lead articles on this subject published in the July and August edition of Mining Engineering. It should be a great talk to start the year. Our good friends at **Eklund Drilling** have once again volunteered to host the social hour at our inaugural meeting.

The first meeting is always a great time to renew contacts and meet new people after a long summer recess of GSN meetings. The social hour and dinner provide a good opportunity to catch up on other people's activities and learn about the latest rumors or discoveries. It should be a good meeting and I look forward to seeing you there.

### From the Foundation Chairman:

Greetings to all, and I do hope that everyone who wants to be busy IS!! It has been a hectic year and with Fall rapidly approaching several things come to mind regarding the Foundation. We are ramping up our fundraising efforts, and always welcome input and assistance. We are focusing efforts on not only the mineral development industry, but also in the communities within which we work.

Please share any recommendations you may have with me at [carpenter@ncgi.reno.nv.us](mailto:carpenter@ncgi.reno.nv.us) regarding fundraising, people to assist, people and companies to contact, etc. I look forward to another great year of educational outreach through the Foundation. Good luck to you all.

*Ann Carpenter*

**It is time to  
renew your dues!**

**For membership/renewal form  
visit our website at  
[Gsnv.org/documents/member.org](http://Gsnv.org/documents/member.org)**

## GSN'S 16<sup>th</sup> ANNUAL FAMILY PICNIC

Sunday, October 10, 2004 at Rancho San Rafael

Don't forget to come to the GSN family picnic on Sunday, October 10<sup>th</sup>, 12 pm - 5 pm at the HIGHLAND PAVILION at Rancho San Rafael. Turn west off Sierra Street into the park and proceed west past all the buildings to the LAST picnic pavilion to the west. Signs will be posted. \$5 per person, \$10 per family, for meat, beer, and soft drinks - bring a salad, side dish, or dessert to share. If you can't commit now, not knowing if you'll be in the field or not, come anyway at the last minute if necessary - we will hunt you down for your \$5 contribution!.

**GAMES!** The traditional rock hammer throw and gold pan toss and other appropriate competitions will occur, including the infamous egg toss!!! Don't miss it!!!

### 16<sup>th</sup> ANNUAL GSN FAMILY PICNIC Great Basin Adventure Park at Rancho San Rafael

Name: \_\_\_\_\_

Total # family members or guests in your party: \_\_\_\_\_

Ages of children: \_\_\_\_\_

Address: \_\_\_\_\_

City/State/Zip: \_\_\_\_\_ Daytime phone: \_\_\_\_\_

Bringing salad: \_\_\_\_\_ or dessert: \_\_\_\_\_

Enclosing: **\$10.00 per family** or **\$5.00 per single**

**Please mail to: Geological Society of Nevada  
PO Box 13375, Reno, NV 89507, or fax to: 775/323-3599**

## AIPG GRANT

GSN extends a big thank you to the American Institute of Professional Geologists and Kel Buchanan for providing a matching grant to the GSN Foundation of \$4000 to augment the GSN K-12 field trip grant program this year. AIPG donated the money to the Foundation to be matched in part by a grant of \$2000 from GSN funds. This grant will enable us to expand the K-12 field trip grant program to a greater number of classes than we can usually fund.

*Thank you, AIPG, and  
thank you Kel for facilitating this!*

**Looking to dispose of your old map cases? The Tonopah Mining Park is in need of cases, both large and small, in order to safely store their growing collection of historic maps. If you would like to donate, please contact Shawn Hall at (775) 482-9274 to arrange pick-up.**

# GSN October 15, 2004 Membership Meeting

## ACTIVITY UPDATE

Mike Brady, August 2004  
www.activityupdate.com

**Date:** Friday, October 15, 2004

**Time:** Social-6:00, Dinner-7:00, Meeting-8:00

**Reservations:** 775/323-3500; fax 323-3599,  
e-mail gsn@mines.unr.edu

**Deadline:** Reserve by 11 am Thursday, October 14

**Location:** Elks Lodge, 597 Kumle Lane, Reno, NV

**Directions:** Across (W) from the Reno-Sparks Convention  
Center (S Virginia St), behind the Les Schwab Tire Center

**Speaker/topic:** Leroy Schutz, Geologists Add Value at  
Newmont's Nevada Gold Mines.

## GEOLOGISTS ADD VALUE AT NEWMONT'S NEVADA GOLD MINES

Leroy Schutz, Newmont Mining Corporation

Newmont's Nevada mine geologists have created substantial net asset value by developing over 1,350 tonnes (43 Moz) into quality surface and underground gold reserves since 1986. The cyclical ability to convert reserves in the near-mine environment was generally governed by gold price. Between 1997 and 2001, gold prices slumped from \$387 to \$254 per ounce. The reaction was to shift mine geology focus toward optimizing open pit profitability and developing high-grade, high cash flow and low capital development underground reserves. Geologists were requested to quantify the dollar value of their work. During these low gold prices, consistently positive model reconciliation was measured at nearly all Nevada open pit and underground mines. Geologist attention shifted from creating value to realizing value by sharpening skills that apply to measuring and mining gold. After detailed cross-disciplined reconciliation evaluations were accomplished, more than \$65 million projected revenue was added to the Gold Quarry south layback in 2002. At the Lone Tree and Twin Creeks mines, kriged mine polygon construction, controlled blast heave, and geologic advice in selective mining have had multi-million dollar beneficial impacts in 2002-2003. Gold prices have recently soared to as high as \$433/ounce. Geologists leveraged dollar measuring skill sets along with abilities to recognize and act on opportunities to bring about a re-discovery cycle of Nevada exploration and development drilling. Reserve conversions in 2002 and 2003 have exceeded 233 tonnes (7.5 million ounces) and 2004 appears to be following similar trends.

Leroy Schutz is the Director of Newmont's Nevada Exploration and Mine Geology Department which supports 10 open pit and 5 underground mines, the Elko regional exploration office and support service staff in drilling, database and sample warehouse. He has 23 years experience in combined exploration, development and mine geology. He has a Master of Science degree from Colorado State University (1986) and a Bachelor of Science degree from the University of New Mexico (1981). Leroy has worked with Newmont for 12.5 years with Mine geology with experience at the Carlin Trend, the "Valmy Trend" and a year at the Yanacocha mine in Peru. Prior to Newmont, he worked with Lac Minerals, Pegasus Gold, Santa Fe Pacific Gold and MAPCO Minerals.

## NEVADA

Coeur d'Alene Mines Corp. announced that reserves at the Rochester Mine aggregate 32,483,000 tons @ 0.009 opt Au, 0.91 opt Ag proven+probable. (was 46,946,000 tons @ 0.008 opt Au, 0.85 opt Ag proven+probable) M.J.: July 23

Aberdene Mines Ltd. announced that it staked an additional 198 claims in and around its New York Canyon Project. (resource @ Longshot Ridge = 19,470,000 tons @ 0.57% Cu) P.D.: July 2004

Metallic Ventures Gold Inc. announced that recent underground drill results at the Esmeralda/Martinez Project include 251-253.5 feet @ 0.180 opt Au (MUG-64); 271-282 feet @ 0.280 opt Au (MUG-68); 132-135 feet @ 0.130 opt Au (MUG-69); 274.5-277 feet @ 0.300 opt Au (MUG-71); 442-445.5 feet @ 0.200 opt Au (MUG-76); 181-184 feet @ 0.210 opt Au (MUG-77); 431.2-435 feet @ 0.260 opt Au (MUG-78) and 293-296 feet @ 0.090 opt Au (MUG-80). (resource = 192,132 tons @ 0.410 opt Au underground) Press Release: July 22

Placer Dome Inc.(60%) announced that based on recent drill results at the Cortez Hills Project, reserves aggregate 21,230,000 tons @ 0.179 opt Au proven and 25,960,000 tons @ 0.141 opt Au probable. (was 41,215,200 tons @ 0.128 opt Au proven+probable) M.J.: July 30

Midway Gold Corp. and Nevada Western Gold Corp. announced that they are considering a merger. Nevada Western is a unit of Western States Minerals Corp. P.D.: July 2004

Pintail Environmental Solutions Co. announced that it acquired an option to earn a 50% interest in the leach pad ores at the Hycroft Property from Vista Gold Corp. by completing a development program and feasibility study that demonstrates the viability of recovering residual gold in the heap leach material. (presently estimated to contain 600,000 ounces of gold) E/MJ: August 2004

Queenstake Resources Ltd. announced that recent drill results at the Smith Mine Project include 570-585 feet @ 0.486 opt Au (SH-1015); 540-555 feet @ 0.203 opt Au (SH-1016) and 455-470 feet @ 0.213 opt Au (SH-1020). (reserve @ Jerritt Canyon = 2,563,000 tons @ 0.303 opt Au proven+probable) Press Release: August 10

Queenstake Resources Ltd. announced that recent drill results at the Murray Mine Project include 625-635 feet @ 0.213 opt Au (MR-074); 560-575 feet @ 0.158 opt Au (MR-075); 600-625 feet @ 0.324 opt Au (MR-076) and 860-870 feet @ 0.187 opt Au (MR-081). (reserve @ Jerritt Canyon = 2,563,000 tons @ 0.303 opt Au proven+probable) Press Release: August 10

Queenstake Resources Ltd. announced that recent drill results at the Starvation Canyon Project include 525-540 feet @ 0.466 opt Au (TJ-114C); 320-345 feet @ 0.402 opt Au (TJ-119C); 298-328 feet @ 0.355 opt Au (TJ-126C) and 488-498 feet @ 0.346 opt Au (TJ-128AC). (resource = 1,000,000 tons @ 0.153 opt Au) Press Release: August 23

Barrick Gold Corp. announced that reserves at the Meikle Mine aggregate 9,177,000 tons @ 0.377 opt Au proven+probable. (was 9,770,000 tons @ 0.398 opt Au proven+probable) 2003 Annual Report

## SEND YOUR FAVORITE TEACHER ON A ROCK TOUR!

### GSN K-12 EARTH SCIENCE FIELD TRIP GRANTS

The GSN Education Committee is now accepting applications from Nevada K-12 teachers for field trip grants of up to \$300 to offset TRANSPORTATION costs for taking their classes on earth-science field trips. The application form is simple and straight-forward, and is DUE NOVEMBER 1<sup>st</sup>, 2004.

The grant guidelines are outlined at:

<http://www.gsnv.org/documents/edguide.htm>

and the grant application may be printed out from the web-site at:

<http://www.gsnv.org/documents/grant.htm>

Teachers must mail or fax in the completed applications to GSN by November 1<sup>st</sup>. Don't miss a great opportunity to help a teacher take a class out for a geology field experience! Spread the word!!

## ATTENTION ALL YOU PUBLICATION LOVERS!!!

Do you have the last four Field Trip Guidebooks? The GSN would be happy to sell them to you. These guidebooks along with the other publications produced by the GSN are available for purchase. A list of publications can be found online at [www.gsnv.org](http://www.gsnv.org). This list can be filled out and faxed, mailed or hand carried into the GSN office. Check your libraries. If you are missing any of publications, call the GSN office and Shannon will be happy to help you with your orders.

### SP 37

Gold Deposits of the Goldfield, Midway, and Thunder Mountain Areas, 305p (2003) \$45.

### SP 38

Regional Geology & Gold Deposits of the Silver Peak Area-Mineralization Hosted by Metamorphic Core Complexes, 211 p. with references, 206 without (2003) \$40.

### SP 39

Gold Deposits of the Independence Mountains, Elko Co., Nevada. Jerritt Canyon and Big Springs Districts (sub-title), 189p. plus 29 page insert, total 218 p. (2004). Call for price.

### SP 40

New Discoveries, Exploration and Mining Activities along the Central and Southern Battle Mountain – Eureka Trend, Lander and Eureka Counties, Nevada. (2004). Call for price.

## PAID ADVERTISEMENTS



**Peg O'Malley Graphix**  
13465 Mahogany Drive • Reno, NV 89511 • 775/851-0185

- Presentation & Promotion Graphics
- Web design and management
- Cartoons and Logo Designs
- Specialist in Raster Graphics
- M.S. in Geological Sciences

peggraphix@softcom.net · www.peggraphix.com  
Over 35 years geological & graphics experience.

## Sample Bags



HUGE INVENTORY      LOW, LOW PRICES

**Legend, Inc.**  
140 Manuel • Reno, Nevada 89502 • 775-786-3003  
[www.legend-reno.com](http://www.legend-reno.com)

## The GSN Foundation wishes to thank the following donors:

### DONOR UP TO \$499


Steve Barnwell  
Bert Jefferies

Joseph Anthony Kizis, Jr.

Liang Chi Hsu  
Mark J. Abrams

### GOLD LEVEL \$1,000-4,999

AIPG



## Geological Society of Nevada Symposium 2005

15-18 May 2005, Reno, Nevada (USA)

### WINDOW TO THE WORLD

Talks & Posters	Short Courses & Seminars
Core Shack	Field Trips
Vendor Exhibits	Networking

**Call for papers:** We invite geoscientists worldwide to submit original papers for oral or poster presentation at the Symposium. Descriptive papers on recently discovered ore deposits are especially invited.

Geological Society of Nevada Symposium 2005, [gsnsymp@unr.edu](mailto:gsnsymp@unr.edu)  
[www.gsn2005.org](http://www.gsn2005.org), 775-323-4569, fax 775-323-3599  
PO Box 13375, Reno, NV 89507-3375



## Enviroscientists, Inc.

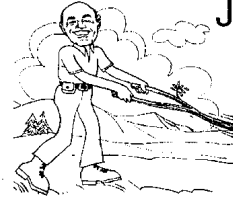
Reliable Service for All Your Environmental Needs

4600 Kietzke Lane, Suite C129, Reno, Nevada 89502  
Phone: (775) 826-8822 Fax: (775) 826-8857

**Richard DeLong**  
President

www.enviroincus.com

**Opal Adams**  
Vice President



## JOSEPH R. ANZMAN

Exploration Geophysicist

- consulting
- interpretation
- project management
- geophysical surveys
- domestic & foreign

P.O. Box 370526  
Denver, Colorado 80237  
303-337-4559  
telephone/fax

## Jo Beth Allen Professional Graphics

CAD Drafting/Digitizing/Scanning  
High Resolution Presentation Graphics  
Plotting/Printing  
Geologist

1055 Joshua Drive  
Reno, Nevada 89509

Phone: 775-324-7960  
Fax: 775-324-7583

jobeth@yellowsb.net



## Carlin Trend Mining Supplies & Service

369 5th St., Elko, NV 89801  
(775) 778-0668, Fax: (775) 778-0687, carlintrend@frontiernet.net

Geological Consulting - Claim Staking - Soil Sampling  
Mineral Surveys - Mine Hazard Fencing  
Geology & Drafting Supplies - AutoCad & GIS  
Temporary Employees in All Fields

Fire Assay  
ICP - OES  
ICP - MS  
AAS  
Custom Preparation  
Bullion Analyses  
BLEG

**Corporate Office**  
1500 Glendale Avenue  
Sparks, NV U.S.A. 89431-5902  
Telephone (775) 356-0606  
Fax (775) 356-1413

**Elko Office**  
2320 Last Chance Road  
Elko, NV U.S.A. 89801-4852  
Telephone/Fax (775) 738-9100

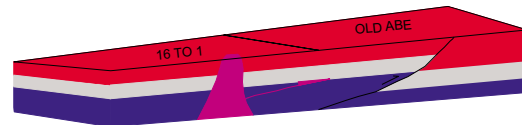
E-mail: AALADMIN@aallabs.net  
Website: www.aallabs.com

## American Assay & Environmental Laboratories



## G.I.S. Land Services

**Greg Ekins M.S. R.L.P. #32306** President  
Mineral Landman - Computer Draftsman  
"From Courthouse Records to Final Map"



Surface Title  
Mineral Title

AutoCad - ArcView - Mapinfo  
Geologic, GeoChem and Land Status Maps  
www.gislandservices.com

E: greg@gislandservices.com  
P: 775-746-8803 F: 775-746-8802

6635 Broadridge Ct.  
Reno, NV 89523

## MINERAL EXPLORATION SERVICES

SOIL SAMPLING  
CLAIMSTAKING  
PROPERTY EVALUATION  
MINE HAZARD FENCING

5655 Riggins Ct., #15, Reno, NV 89502  
Tel: (775) 954-1082 Fax: (775) 829-6882  
email: day@mineralexploration.com

## WE CAN HELP!

- Environmental and exploration support services
- Celebrating 40 years of service to the mining industry
- Experience in Mexico / Canada / Alaska



**NORTH AMERICAN EXPLORATION INC.**  
**NORTH AMERICAN MINE SERVICES INC.**  
GEOLOGY | GEOPHYSICS | GEOCHEMISTRY  
HYDROLOGY | ENVIRONMENTAL SERVICES

472 North Main • Kaysville, Utah 84037 • Phone (801) 546-6453 Fax (801) 546-0884  
nae@nae-xploration.com

# GEOLOGICAL SOCIETY OF NEVADA



gsn@mines.unr.edu • www.gsnv.org  
Telephone (775) 323-3500 FAX (775) 323-3599  
Post Office Box 13375  
Reno NV 89507  
USA

NON PROFIT  
ORGANIZATION  
U.S. POSTAGE  
PAID  
RENO, NV  
PERMIT NO. 625



## **EKLUND DRILLING COMPANY INC.**

**WITH OFFICES TO SERVE YOU**

### **IN ELKO**

605 Union Pacific Way  
Elko, NV 89803  
(775) 738-1980  
Fax (775) 753-9229

### **IN RENO**

100 W. Liberty St.  
Ste 900  
Reno, NV 89501  
(775) 324-7730  
Fax (775) 322-6644