

# GEOLOGICAL SOCIETY OF NEVADA NEWSLETTER

Geological Society of Nevada, 2175 Raggio Parkway, Reno, NV 89512  
(775) 323-3500 - Hours Monday -- Friday, 10 a.m. to 5 p.m.  
Website: [www.gsnv.org](http://www.gsnv.org) E-mail: [gsn@gsnv.org](mailto:gsn@gsnv.org)



**NOVEMBER 2025 ISSUE, Vol. 41, No. 9**

**Published monthly except June and July**

## **PRESIDENT**

Steven Weiss, Consultant, Geologist  
[siraweiss@outlook.com](mailto:siraweiss@outlook.com)

**VICE PRESIDENT,**  
David Boden, TMCC Emeritus  
[dboden@tmcc.edu](mailto:dboden@tmcc.edu)

**SECRETARY**  
Mandy Bengtson, SWCA  
[Mandy.bengtson@swca.com](mailto:Mandy.bengtson@swca.com)

**TREASURER**  
Robert Kastelic, McEwen Mining  
[bob\\_kastelic@yahoo.com](mailto:bob_kastelic@yahoo.com)

**MEMBERSHIP CHAIR**  
Christian Thomas, Geologist  
[christianthomasgeo@gmail.com](mailto:christianthomasgeo@gmail.com)

**PUBLICATION CHAIR**  
Michael Say, Extrados Gold  
[msay@extrados.gold](mailto:msay@extrados.gold)

**DIGITAL MEDIA CO-CHAIRS**  
**Peter O'Byrne**, Target Synthesis  
[Peter.Obyrne@outlook.com](mailto:Peter.Obyrne@outlook.com)  
Dakota Prudhomme, Zonge Intl.  
[dakota.prudhomme@zonge.com](mailto:dakota.prudhomme@zonge.com)

**GSN EXECUTIVE MANAGER**  
Laura Ruud, [gsn@gsnv.org](mailto:gsn@gsnv.org)

**GSN OFFICE MANAGER**  
Lauren Sankovitch,  
[GSNOfficeManager@gmail.com](mailto:GSNOfficeManager@gmail.com)

## **GSN BOARD OF DIRECTORS**

**Chairman**  
David Caldwell

**Current GSN President**  
Steve Weiss

**Most Recent Past GSN President**  
Patty Capistrant

**Elko Chapter President**  
Sergey Konyshv

**Winnemucca Chapter President**  
Eli Witte

**Southern Nevada Chapter President**  
Elizabeth MacDonald

**Class A, 2024-2027**  
Robert Thomas  
John Watson

**Class B, 2025-2028**  
David Caldwell—CHAIR  
Greg French

**Class C, 2023-2026**  
David Shaddrick (deceased)  
Mark Travis

**NOTE NEW DAY  
AND TIME!  
NOV. 4, 2025  
TUESDAY**

## **GSN SOUTHERN NEVADA CHAPTER**

The GSN Southern Nevada Chapter meeting will be at UNLV, 4505 S Maryland Pkwy, Robert L. Bigelow Physics (BPB), Rm 102. **Time:** 7:30-9 pm. **Speaker:** Dr. Jeffrey Hedenquist. **Title:** "Exploration implications of multiple formation environments of advanced argillic minerals: Maintain mineralogy, textures, and morphology." **Sponsor:** **Kinross, in partnership with UNLV.** Drinks and appetizers will be provided after the talk. For more information, please contact Southern Nevada President, Liz MacDonald at: [liz\\_macdonald@outlook.com](mailto:liz_macdonald@outlook.com). Details on page 7.

**NOV. 13, 2025  
THURSDAY**

## **GSN WINNEMUCCA CHAPTER**

The GSN Winnemucca Chapter meeting will be held at The Martin Hotel, 94 W. Railroad St., Winnemucca, NV. **Speaker:** Richard J. Lundin. **Title:** "What the Miners Left Behind: Processing Mineral Tailings." Drinks at 6 pm, Food at 6:30 pm, Talk at 7 pm. **Sponsor:** **Premier Drilling.** For more information, please contact Chapter President, Eli Witte at: [witteeli9@gmail.com](mailto:witteeli9@gmail.com). Details on pg. 8

**NOV. 20, 2025  
THURSDAY**

## **GSN ELKO CHAPTER**

The GSN Elko Chapter meeting will be held at the Western Folklife Center, 501 Railroad St., Elko. **Speaker:** Alex Davidson. **Title:** "Exploration update on developing high grade Ag trends at Hycroft" **Sponsor:** **Alford Drilling.** Please contact Elko President, Sergey Konyshv, [sergey606@gmail.com](mailto:sergey606@gmail.com) for more information. Details on page 9.

**NOV. 21, 2025  
FRIDAY**

## **GSN MOTHERSHIP MEETING RENO**

The GSN meeting will be held at the Atlantis Hotel & Casino, Reno, NV. **Speaker:** Dr. Adam Kent, Oregon State University **Title:** "Predicting Oregon's next volcanic eruption." **Sponsor:** **Legacy Drilling.** Dinner cost is \$60. **PLEASE RSVP BY 5 PM ON MONDAY, NOVEMBER 17th.** Please register for dinner online or RSVP at this link: [RSVP/DINNER](#). Details on pg. 3.

**SAVE THE DATE  
DEC. 17, 2025  
WEDNESDAY**

## **GSN HOLIDAY PARTY AND FUNDRAISER**

Mark your calendars now and get ready to take part in the Silent Auction and Raffle by donating a prize! **Sponsors: Envirotech Drilling, American Assay & Jentec Drilling Supply.** See page 10 for details.



## GSN NOVEMBER meeting SPONSOR



## FROM THE PRESIDENT — NOVEMBER 2025

Steve Weiss

GSN President June 1, 2025-May 31, 2026



Members of the Geological Society of Nevada, Greetings and Salutations!

For many geoscientists here in Nevada, the eruption of Mount St. Helens 45 years ago in May 1980, in the Cascade Range of Washington, sparked a sudden realization that geology is more than a field of study, matter of pit high-wall stability, or something learned from textbooks and field camp assignments. 57 people are known to have died, hundreds of square miles of timber were destroyed, and day turned into night in Spokane, WA 250 miles away. By volcanological measures, it was a measly eruption. An estimated total volume of a bit less than 0.5 cubic miles of magma was



Eruption column from Lassen Peak, May 1915 viewed from Red Bluff CA.

ejected in 1980 and during the subsequent lava dome extrusion and small pyroclastic flows that occurred intermittently until 1991. A wealth of new science and understanding of volcanic hazards, magmatic activity and linked seismicity flowed from studies at Mount St. Helens by academic and government agencies in the 1980s and 1990s.

65 years earlier, and 495 miles to the south, Lassen Peak erupted in May 1915 in northern California. By most estimates, significantly less magma was ejected, but the eruption column was visible from Eureka, CA, 150 miles to the west, from Sacramento 130 miles to the south, and was spectacular from Red Bluff 45 miles to the southwest. Ash even fell in Elko, NV. Lassen is generally regarded as the southernmost major volcano of the Cascades volcanic arc. Both Lassen and Mount St. Helens seem quietly at rest for now.

But what about the half dozen major volcanoes of the Oregon Cascades situated between them? Which one is next, and when, and how might such potentially impactful eruptions be forecast? "*Predicting Oregon's next volcanic eruption*", is the title of the presentation to be given by Dr. Adam Kent of Oregon State University at our November

monthly meeting in Reno on November 21, 2025. GSN greatly appreciates and thanks to **Legacy Drilling** for sponsoring the Social Hour for the November meeting. Please join us!

Date	Speaker	Topic	Affiliation
11/21/2025	Dr. Adam Kent	Predicting Oregon's next volcanic eruption	Oregon State Univ.
12/17/2025	Holiday Party and GSN Foundation Fundraiser		
1/16/2026	Perseo Anaya	Piñon, Dark Star and so much more: South Carlin Complex update	Orla Mining

The December monthly meeting will be held on December 17<sup>th</sup> at the Atlantis and will be the GSN Foundation's annual Holiday Party and Fundraiser. In January, tons and grade will take center stage with an update on Orla Mining's gold deposits in the South Carlin Complex.

Finally, please don't forget to renew your membership. Dues are still \$50 and were payable in September. Saludos!

—Steve Weiss

*GSN wishes to thank our OCTOBER sponsors in*

*Reno, Elko, Winnemucca & Southern NV:*



**GSN MEMBERSHIP MEETING—FRIDAY, NOVEMBER 21, 2025**

**TIME: Drinks @ 6:00 pm, Dinner @ 6:30 pm, Talk @ 7:15 pm**

**WHERE: The Atlantis Hotel & Casino, S. Virginia St., Reno**

**Sponsor: Legacy Drilling**

**Please RSVP for dinner online by November 17th at: [RSVP/DINNER](#)**

**GUEST SPEAKER:**

**Dr. Adam Kent**

**Oregon State University**

**TITLE: “Predicting Oregon’s next volcanic eruption”**

**Abstract:** Studies of the eruption history of volcanoes is essential for understanding how volcanic and magmatic systems behave, and also provides valuable insights for predicting when future eruptions might occur, and what their consequences will be. The most recent eruption in Oregon occurred in the 1780s, but there is no doubt that future eruptions will occur in the state. Imagining the future volcanic history of Oregon’s volcanoes has important scientific and hazards implications, but has also proven a powerful tool for capturing the public’s attention, and educating about volcanoes and volcanic hazards.

This talk combines results from recent studies of Oregon volcanoes with historical observations and insights from active analog volcanoes around the world, and then adds a dash good old-fashioned speculation to consider what Oregon’s next volcanic eruption might be.





# FACES OF GSN

Andrew J. Martin - Las Vegas, Nevada



Figure 1: Me and my student Jenni in Cyprus in front of a black smoker deposit.

I fell into geology by complete accident, I'd always loved geography and was chatting with a teacher at a career fair who mentioned in passing he teaches geology – I then took two years of geology and was hooked! For my BSc dissertation I spent 4 weeks in Cyprus, a slice of 90-million-year-old oceanic crust, where the aim of my research was to understand how metals are leached from the crust and concentrated in ore deposits (Fig. 1). The Troodos mountains in Cyprus are beautiful – I constantly had one eye on the rocks and one eye on the road! For my MS dissertation I switched gears and worked on ion adsorption rare earth element deposits in the kaolinite mines of the SW UK. The lure of Cyprus was too strong and I returned for my PhD studies, this time focusing on the enrichment of metals in volcanogenic massive sulfide deposits (aka ancient black smoker hydrothermal vents).

In 2018 I had the opportunity to participate in an International Ocean Discovery Program (IODP) expedition to Brothers volcano, located on the Kermadec arc off the coast of New Zealand in the North Pacific Ocean. I sailed as an alteration mineralogist, working alongside a team of about 30 scientists from all over the globe (Fig. 2), we worked 12hr shifts for two months straight without seeing any land! We were drilling an underwater volcano 1500 m below the sea to understand how metals are enriched. This was one of the most incredible experiences of my life... standing on the deck of a world-class research vessel watching giant albatross swooping across the waves is a memory I will never forget. It was through this cruise that I met my future mentor and friend, Dr. John Jamieson – this is how I ended up in the bleak, beautiful frozen land of Newfoundland, Canada.



Figure 2: Me and the science party on the JOIDES Resolution in Auckland (Bill Crawford)



Figure 3: Cape Spear, the eastern most tip of North America, about 30 mins from St. John's

In 2019 I packed my bags and headed to Canada (Fig. 3), just in time for lockdown! I joined John's research group at Memorial University of Newfoundland as a postdoctoral research fellow with my research focusing on the formation of black smoker hydrothermal vents. In 2021 I was back at sea, this time aboard a British vessel, the James Cook, we were heading to a place called Semenov, located at 13 degrees north on the Mid-Atlantic Ridge, basically in the middle of the ocean off Brazil. We were drilling into mantle rocks exposed on the seafloor. One highlight of this mission was actually returning to port in Ponta Delgada in the Azores, a pod of dolphins was riding the bow wave as we entered the harbor!

Despite being in the desert in a land locked state, my passion for seafloor research continues, the past two years me and my students have had the opportunity to join research cruises in Japan aboard the research vessel Kaimei (Fig. 4). We visited the Higashi-Aogashima hydrothermal field, a submarine volcano located about a day's cruise from Tokyo. Here we attempted drilling, collected grab samples from the seafloor with robots and surveyed for biology. A highlight that sticks in my mind is sunset over Aogashima island after a stormy day (Fig. 5), the cloudscape was just breathtaking. What was less than ideal was running from the category four typhoon Shan Shan a few days previously!

Since being at UNLV I have grown my research group both in terms of student number and breadth of research, we work on Carlin Au deposits and epithermal Au in Nevada, In-rich skarns in Utah, ultramafic-hosted volcanogenic massive sulfide deposits in



Figure 4: Science party aboard the RV Kaimei in Japan



Figure 5: Sunset over Higashi Island

dunes of Sandwich Harbor where towering pristine sand dunes meet the cool Atlantic ocean was incredible. My second highlight was elephants – watching these terrifying, graceful, social giants interact was mesmerizing, they truly have captured my heart! Where next, who knows, what I do know is that it will be an adventure!

Finland, and seafloor vents in the Atlantic and Pacific oceans. I have also had the wonderful experience of being able to spend a few weeks each summer on the Carlin trend with Nevada Gold Mines, immersing myself in the geology and process of mining and exploration is hugely beneficial. My student's enthusiasm and passion drive me to succeed. Luckily I had some incredible mentors in my academic journey and I now feel very privileged to be in a position to return this knowledge and guidance to my own students!

Well, that was a lot about work and my academic journey! But I can assure you I do have a life outside work. I love to travel, hike, run, cook and pottering around in the garden, I also have an unhealthy obsession with aquarium fish and started skiing (badly) last year! This year me and my partner had our 1<sup>st</sup> taste of Africa, taking an epic 5-week road trip across Namibia and Botswana. There are too many highlights to mention, so I'll share two! Driving across the sand

So, with all that said, thanks for reading and don't be a stranger. If you are in Las Vegas or at UNLV, come say hi! If you want to collaborate, amazing, if you want Namibia travel tips, even better!



Figure 6: Sandwich Harbor, Namibia (4x4 for scale)



Figure 7: An elephant enjoying her bath in Etosha





## ***INTERESTED IN JOINING GSN LEADERSHIP?***

**All-call for GSN Members interested in standing for election to serve in leadership positions on one or both of GSN's two Boards as we chart a course of growth for the geosciences in the Great Basin and beyond.**

### ***BOARD OF DIRECTORS***

GSN is a 501(c)(6) Non-Profit Corporation with an 11-member **Board of Directors (BOD)** overseeing governance, advising, and steering on behalf of the Society's Members. The GSN BOD is composed of 6 Directors elected by the sitting BOD, serving in 3 Classes of staggered 3-year terms. The remaining 5 Board seats are filled ex-officio by the Member-elected Presidents of the Winnemucca, Elko and Southern Nevada Chapters as well as the Reno mothership.

The Board of Directors manages GSN's affairs, including institutional continuity, budgeting, investment oversight, communication, and bylaw amendments. They hold 4 quarterly meetings and participate on specific committees (Audit, Fiscal, Personnel Management, Policy, Nominating, and Foundation). Per the GSN Constitution, Elected Board members ***must have served as a past officer (of GSN or GSN Chapters), cannot be a current officer, and must be current GSN Members.***

We currently have two mid-term positions to replace, and a desire to increase the pool of interested nominees for the two positions that come up annually. The renewing class (A, B or C) directors are elected to the BOD by the Membership via email vote in April each year, announced in May, and begin their terms on June 1st.

### ***FOUNDATION BOARD***

GSN Foundation is the 501(c)(3) charitable arm of the Society and is searching for candidates to join its Board for a minimum of one-year terms as it directs the use of funds for scholarships, educational field trips, geological mapping, and other projects that fit the Foundation's charitable mission. Duties include attending 4 quarterly meetings and participation on committees. Any current GSN Member with an interest and bandwidth can apply.

These positions are proposed by the Foundation BOD and voted on annually by the GSN BOD as the sole Member of the Foundation. There is currently one position open, but a full slate of Directors is proposed annually so anyone with a passion for giving back and promoting the geosciences in Nevada is a natural fit. Foundation Board terms begin on June 1.

---

Interested parties should email the GSN Office Manager ([gsn@gsnv.org](mailto:gsn@gsnv.org)) on behalf of the Executive and Nominating Committees to be added to the pool of qualified candidates for consideration. We are happy to discuss one-on-one, and we encourage you to be part of GSN's succession planning with our senior leadership available to mentor and transfer institutional knowledge over the next 5-10 years.



*Please join us at the UNLV campus in Las Vegas, NV this month!*

**Tuesday, November 4<sup>th</sup>**

**7:30-9 PM, drinks and appetizers will be provided after the talk**

**UNLV, 4505 S Maryland Pkwy, Robert L. Bigelow Physics (BPB), Rm 102**

**(<https://maps.app.goo.gl/URk48SF4t4Pmiz8W6>)**

**Free parking in any spot on campus after 7 PM**

**Sponsor: Kinross, in partnership with UNLV**

**Speaker: Dr. Jeffrey Hedenquist**

**Title:** “Exploration implications of multiple formation environments of advanced argillic minerals: Maintain mineralogy, textures, and morphology”

**Abstract:** Most general alteration terms do not communicate the complete mineralogical assemblage, textures and morphology that are essential to interpret alteration genesis. One example is advanced argillic, a term defined by J.J. Hemley in the 1960s to include alunite and anhydrite, aluminosilicates (kaolinite, halloysite, dickite, pyrophyllite, andalusite, zunyite, topaz), and diaspore, all with clear shortwave infrared (SWIR) signatures, plus pyrite. Various assemblages of these minerals can form in five distinctly different geologic environments of (advanced) hydrolytic alteration, at a pH of 4–5 to <1, most at depths <500 m but locally deeper than 1 km, each with different spatial relationship to potential mineralization.

**Biography:** Dr. Hedenquist is an independent advisor to the mineral industry on exploration for and assessment of hydrothermal ore deposits, with work in 45 countries for over 145 companies and agencies on over 440 assignments, including training. From 1979 to 1998 he spent 10 years each with government institutes of New Zealand and Japan, studying active geothermal and magmatic hydrothermal systems, as well as the formation of epithermal gold and porphyry copper deposits. He is also adjunct professor at the University of Ottawa.



For more information, please contact Southern Nevada President, Liz MacDonald at:  
[liz\\_macdonald@outlook.com](mailto:liz_macdonald@outlook.com).



### ***GSN Winnemucca Chapter Meeting***

**Thursday, Nov. 13, 2025**

**Drinks @ 6 PM, Food @ 6:30 PM, Talk @ 7 PM**

**The Martin Hotel, 94 W. Railroad St., Winnemucca, NV**

### **SPONSOR: PREMIER DRILLING**

**Speaker: Richard J. Lundin**

**Talk: “What the Miners Left Behind: Processing Mineral Tailings”**

**Abstract:** As a part of Wondjina Research Institute’s (WRI) and Wombat Mining & Exploration Co.’s (WME) US Mineral Industry Mine Waste Recovery and Resource Recovery Program (USMIMWR & RRP), WRI and WME have investigated since 2001 a series of California Placer Gold\Silver Dredge Tailings sites for the feasibility of reprocessing the material from these sites as sources of Au, Ag, Cr, Li, High-Grade Construction Aggregates and Rare Earth Minerals. It is well-documented in the US Geological Survey file data and published literature that over 500,000,000 yards of Placer Gold\Silver Dredge Tailings exist in California, alone.

WRI and WME was made aware of this situation by the work of Mr. Victor E. Kral and other World War II Office of Mineral Exploration (OME) Records and conversations with former OME Geologists and Mining Engineers in the 1970s. This information directly led to, “What the Miner’s Left Behind,” which is an evolving presentation of the potential of the US to achieve its mineral needs by seriously regarding the potentials of Placer Gold\Silver Tailings as a long-term solution to the US material needs and financial security.

Initially, the presentation describes the situation which the US got itself into through its dependence on the Chinese economy and the efforts of the Chinese government to control the mineral development of the US. The second portion of the presentation regards the efforts of individuals in the USGS to find, characterize and test these resources. The third section describes current California Aggregate Industry realization of the importance of these resources and the resulting operations.

Viewing these current operations as the “ways of the future”, WRI and WME in 2018 took action to initiate a 30-year, 22,000,000-yard Pilot Program that would obtain scientifically sound and transparent information so as to guide further efforts. The resulting WRI\WME Moccasin Creek Riparian Restoration project is described in depth.

If you have any questions, feel free to contact me at [ewitte@i80gold.com](mailto:ewitte@i80gold.com)

Can’t wait to see you all there!

Eli Witte,

Winnemucca Chapter President







*The GSN Elko Chapter invites you to their November meeting!*

**Thursday, November 20th, 2025, Food & Drinks @ 6pm**

**Western Folklife Center, 501 Railroad St., Elko, NV**

**SPONSOR: ALFORD DRILLING**

**Speaker: Alex Davidson**

**Title:** “Exploration update on developing high grade Ag trends at Hycroft”

**Abstract:** Work completed in 2023-2024 has further defined higher grade silver mineral trends within the Brimstone and Vortex ore bodies. Trend orientation, metal zonation, vein density, alteration, and Au-Ag ratios indicate these trends likely have separate fluid sources. Brimstone mineralization is dominantly vein hosted with remarkably high Ag-Au ratios ( $>3000:1$ ), has increased Cu, Pb, Zn ratios, and petrographic work indicates the dominant ore minerals are tetrahedrite and naumannite. Vortex mineralization is tied more closely to a flooding event influenced by pre-mineral low angle ( $35^{\circ}$ -  $40^{\circ}$ ) structural fabric resulting in a broader zone of mineralization. Dominant silver minerals identified at Vortex are miargyrite and selenostephanite; Ag-Au ratios  $>150:1$  are observed. Petrography suggests that very fine-grained gold is contained in arsenical and antimonial pyrite overgrowth bands, on earlier, coarser grained pyrite; exceptionally fine grained arsenopyrite is also identified. Electrum has not been identified at either Brimstone or Vortex.

Ongoing work on structural interpretation, alteration models, down hole vein orientations, geochemical analysis, petrography and geophysics will continue to refine the understanding of these trends as well as identify targets moving forward.



**ALFORD DRILLING**  
DIAMOND CORE | REVERSE CIRCULATION

Please contact Elko Chapter President, Sergey Konyshov if you have any questions. [Sergey606@gmail.com](mailto:Sergey606@gmail.com)



## NEWS FROM THE GSN FOUNDATION

### 2025 HOLIDAY PARTY AND FUNDRAISER



November 2025

Bob Felder

This year the annual holiday party and fundraiser will be held at the Atlantis on Wednesday, Dec. 17th. Mark your calendars!! We couldn't do this without the continuing generous support of our members, so it's time to start thinking about donations for the fundraiser. Items such as mineral specimens, gift baskets, wine, spirits, jewelry, mining artifacts, and usable field gear are all good ideas; we welcome quality items that may be desirable for auction or bid.



Paragon Geochemical has once again agreed to store donated items at their office, located at 1545 Industrial Way in Sparks. Drop-off time is between 9:00AM and 3:00PM. Please see Carol Flores. A big thank you to Paragon for their willingness to help GSN with our annual holiday fundraiser.

Note to donors: Please leave a business card (or something to identify you) attached to your donated item(s) along with an indication of its value. This is a great help to the organizers! Thank you in advance.

If you're out of ideas, that's OK! Please consider making a cash donation to the Foundation on the night of the party. The GSN Foundation realizes the full value of your cash donations! Thank you!

## 34<sup>th</sup> Annual AIPG EXPLORATION ROUNDUP

**Thursday, December 4, 2025 | ATLANTIS CASINO RESORT**

**(Hotel Reservations 1-800-723-6500 – Code: SOCIAL RATE)**

**6:00 Open Bar, 7:00 Dinner, 8:00 Program**

### COMPANIES

**NV Gold Corp | Lithium Americas**

**I-80 Gold | Blackrock Silver | Nevada Gold Mines | Lahontan Gold | McEwen Inc.**

**Meeting Sponsor: Boart Longyear**

***Join us in thanking Boart Longyear for sponsoring cocktails and UNR students.***

**RAFFLE ITEMS (\$25 or 5 for \$100); Proceeds fund UNR student chapter functions**



Fluorite—England



Fluorite—Illinois



Fluorite—Illinois

**DINNER: \$70 (No Credit Cards: Cash or Check Only)**

**Mackay Students: *FREE***

**RESERVATIONS— Deadline: Friday, November 28<sup>th</sup>, 5:00 p.m**

**Kel Buchanan ([summitcrk@aol.com](mailto:summitcrk@aol.com)), 775-786-4515, fax 786-4324**

# Mining Activity Update

September 2025, Mike Brady

[LMBrady@aol.com](mailto:LMBrady@aol.com)

## NEVADA

McEwen Mining Inc. announced that recent drill results at the Windfall Project include 70.7-80.5 meters @ 1.19 gpt Au (WF030); 99.0-116.1 meters @ 1.20 gpt Au (WF031); 50.9-89.2 meters @ 2.0 gpt Au (WF032) and 58.6-81.4 meters @ 0.95 gpt Au (WF033). (resource @ Lookout Mountain = 23,472,000 tonnes @ 0.58 gpt Au measured+indicated) *Press Release: September 3*

Scorpio Gold Corp. announced that based on recent drill results at the Manhattan Project, resources aggregate 18,343,000 tonnes @ 1.26 gpt Au inferred. (was 300,000 tonnes @ 10.58 gpt Au indicated) *Press Release: September 11*

NevGold Corp. announced that re-assay of historical drill results at the Limousine Butte Project revealed 85.3-141.7 meters @ 1.74 gpt Au, 0.10% Sb (RR03-01); 13.0-70.1 meters @ 1.45 gpt Au, 0.16% Sb (LB10); 36.6-164.6 meters @ 0.06 gpt Au, 0.13% Sb (LB28) and 30.5-111.3 meters @ 0.10 gpt Au, 0.08% Sb (LB31). (resource = 9,600,000 tonnes @ 0.78 gpt Au measured+indicated) *Press Release: September 25*

I-80 Gold Corp. announced that recent drill results at the Granite Creek Project include 616.6-619.5 meters @ 33.6 gpt Au (IGS25-02A); 95.1-100.1 meters @ 12.2 gpt Au (IGU25-02); 113.5-117.0 meters @ 11.4 gpt Au (IGU25-04) and 244.8-247.8 meters @ 11.4 gpt Au (IGU25-05). (underground resource = 562,000 tonnes @ 10.49 gpt Au measured+indicated) *Press Release: September 10*

Fortitude Gold Corp. announced that recent drill results at the County Line Project include 15.24-22.86 meters @ 0.37 gpt Au (CLRC-355); 30.48-36.58 meters @ 0.43 gpt Au (CLRC-356); 16.76-30.48 meters @ 0.41 gpt Au (CLRC-357) and 19.81-32.0 meters @ 0.49 gpt Au (CLRC-359). (resource = 1,202,500 tonnes @ 0.97 gpt Au measured+indicated) *Press Release: September 24*

Montana Goldfields LLC. announced that it acquired a lease of the Dixie Comstock Property from Getchell Gold Corp. for \$25,000 now, \$25,000/year lease payments and \$600,000 in exploration expenditures over 3 years. (resource = 4,260,000 tonnes @ 1.06 gpt Au inferred) *Press Release: September 9*

Getchell Gold Corp. announced that recent drill results at the Fondaway Canyon Project include 25.0-83.7 meters @ 2.1 gpt Au (FCG25-29) and 124.2-180.0 meters @ 1.1 gpt Au (FCG25-30). (resource = 13,518,000 tonnes @ 1.49 gpt Au indicated) *Press Release: September 23*

The U.S. Energy Department announced that it is in discussions with Lithium Americas Corp.(62%) and General Motors Corp.(38%) regarding its \$2,260,000,000 loan guarantee for the Thacker Pass Project. (reserve = 1,056,700,000 tonnes @ 0.547% Li<sub>2</sub>O proven+probable) *W.S.J.: September 25*

Surge Battery Metals Inc. and Evolution Mining Ltd. announced that they will combine their respective property interests in the Nevada North Lithium Project area to form a 77% Surge/23% Evolution joint-venture. (resource = 701,400,000 tonnes @ 0.648% Li<sub>2</sub>O inferred) *Press Release: September 16*

Lahontan Gold Corp. announced that recent drill results at the Santa Fe/York Project include 57.9-67.1 meters @ 0.83 gpt Au (CAL25-01R); 44.2-53.3 meters @ 0.14 gpt Au (CAL25-02R); 25.9-39.6 meters @ 0.16 gpt Au (CAL25-03R) and 67.1-106.7 meters @ 0.30 gpt Au (CAL25-04R). (resource= 48,393,000 tonnes @ 0.92 gpt Au indicated) *Press Release: September 2*

Sun Silver Ltd. announced that recent drill results at the Maverick Springs Project include 230.1-284.2 meters @ 0.23 gpt Au, 116.7 gpt Ag (MR25-212). (resource = 218,500,000 tonnes @ 0.31 gpt Au, 42.2 gpt Ag inferred) *Press Release: September 3*

Blackrock Silver Corp. announced that based on recent drill results at the Tonopah West Project, resources aggregate 1,333,000 tonnes @ 220.7 gpt Ag, 2.5 gpt Au indicated and 5,138,000 tonnes @ 215.1 gpt Ag, 2.85 gpt Au inferred. (was 6,119,000 tonnes @ 242.6 gpt Ag, 2.9 gpt Au inferred) *Press Release: September 8*

Nevada Lithium Resources Inc. announced that it identified significant rubidium and cesium contained in the Bonnie Claire Lithium Deposit. (resource = 275,850,000 tonnes @ 0.758% Li<sub>2</sub> indicated in lower zone) *Press Release: September 17*





# 2025 FALL FIELD TRIP WRAP UP



*Dave R. Boden*

**GSN's 2025 field trip to the McGinness Hills geothermal power facility and Gold Hill mining operation near Round Mountain accommodated as many as 43 participants and occurred from October 2 to October 4. The goal of the trip was to better illustrate the close connection between power-producing geothermal operations and mineralized epithermal systems.**

McGinness Hills, along with three other producing geothermal power plants in Nevada (Blue Mountain, Tungsten Mountain, and Don Campbell) all began as mineral exploration plays. Unfortunately, snow hindered our ability to fully examine the sinter terraces at McGinness Hills and a nearby area of older acid-sulfate alteration. Anaconda geologists, who explored the property in the mid-1980s, initially considered the McGinness Hills sinter as a potential analog of the Au-rich, hot-spring related McLaughlin mine in California, and the nearby older acid-sulfate alteration as the upper part of a buried porphyry Cu-Mo system. Although seeing these parts of the McGinness Hills property were short-circuited due to weather and road conditions, we were able to visit the control room at the McGinness Hills geothermal plant 1 and ask questions to the plant operators about the processes involved with geothermal power generation. Outside we were shown the gathering system for the plant's three OECs (Ormat Energy Converters), where the hot geothermal fluid ( $T = 305\text{--}310\text{ }^{\circ}\text{F}$ ) boils a working fluid, whose vapor is sent to low- and high-pressure turbines connected to a common generator. Altogether, the McGinness Hills facility consists of three separate geothermal plants, which collectively accommodate about 50,000 gpm ( $\sim 2300\text{ kg/s}$ ) of geothermal fluid from 15 production wells to yield a combined power output of approximately 146 MW (the largest of its kind in Nevada); that's enough power to serve about 120,000 homes.







For our second day, we visited the currently dormant Gold Hill mine located about 7 km north of the giant Round Mountain mine. According to co-leader Sara Spirek, recent open-pit mining at Gold Hill produced about 380,000 ounces of gold from 2012-2023. After arriving at Gold Hill, we first examined the distal eastern part of the mineralized system, where generally east-west striking and steeply dipping quartz-adularia fracture coatings and vuggy breccia zones are exposed about one kilometer east of the open pit. In the pit, several narrow east-west striking veins could be observed in the high walls, but closer inspection proved difficult due to muddy road conditions which prevented us from reaching the bottom of the pit. Perhaps one of the most interesting parts of our tour at Gold Hill was inspection of core from holes that transected the downfaulted and buried large sinter deposit and underlying Au-Ag-bearing colloform quartz veins (carrying up to >50 ppm Au and as much as 2000 ppm Ag). The day ended with a discussion of the Round Mountain operation from the viewer lookout above the Round Mountain open pit before returning to Reno.

I would like to extend a hearty thank you to my field trip co-leaders, Ben Delwiche (**Ormat Technologies**), Bob Casaceli, and Sara Spirek (**Kinross Gold**) for sharing their valuable time and expertise with us. Without the logistical support of Laura Ruud and Lauren Sankovitch, this trip would not have been possible. Thanks to Marcus Angus for keeping things running smoothly. I would like to thank Tom Callicrate, Bob Casaceli, Lindsay Craig, and Steve Weiss for their careful driving under less-than-desirable conditions at times. Giacomo Moe and Dakota Prudhomme generously drove their pickup as a support vehicle. Both Steve and Laura are to be thanked for their patience in answering my too many questions in preparing the field trip guidebook. Michael Say kindly provided an 11<sup>th</sup> hour lookover of the guidebook. A hearty thanks goes out to our sponsors that helped keep costs manageable—**Premier Drilling, ALS, American Assay Laboratories, Neilsen Exploration, Boart Longyear, Zonge International, and Envirotech Drilling**. Additionally, Joe Laravie (**Great Basin GIS**) kindly provided plates and maps for the guidebook.



## 2027 GSN Symposium (27GSNS)

### Symposium Event Dates:

Thursday 22 April to Saturday 1 May 2027

**Location:** The Nugget Casino, Reno/Sparks, Nevada

**Theme:** Ore Deposits of the Great Basin – Key to America's Mineral Independence

**Update:** The symposium committee thank **Steffanie Cruse** for her valuable contribution as the outgoing symposium committee Secretary, and we wish her well with her future geoscience endeavours. The committee welcomed **Eli Turner** as the incoming Secretary during the October meeting. We thank Eli for his leadership in supporting his professional organisation in a volunteer capacity.

The [symposium website](#) continues to be updated and developed. Suggestions to improve are graciously received, please contact the Chairperson. Summaries regarding requirements for the **Coreshacks** and **Posters** are now available on the website and managed by co-chairs **Patricia Capistrant** and **Danielle Schmandt**.



*The winning photo (above) is of the only surface outcrop of the Roberts Mountains thrust. The locality is in the classic area where the Roberts Mountains thrust was first recognized, that is, in the Roberts Mountains and high up in Vinini Creek. At this locality, the base of the Roberts Mountains allochthon, Devonian mudstone of the yet-to-be named Gable Formation structurally overlies the rhythmically bedded siltstone of the Mississippian Webb Formation, which is the highest unit of the Cordilleran miogeocline. —Stan Finney personal communication*

Congratulations to **Stan Finney**, Professor Emeritus from the Department of Earth Science, California State University at Long Beach, for submitting the winning photo for the symposium photo competition held last month and receiving the \$200 cash prize. A special mention to runner-up Bob McCusker as well as for photos submitted by Ken Krahulec and Daniel Sturmer. The photos will also be used for public display on the symposium website and event application. Thank you also to Laura Rudd for providing past GSN field photos with some beautiful NV scenery shots and photos of geologists socializing and having rock-on fun in the field!

The committee is currently working towards launching the **Call for Speakers, Papers, Courses, Core Shacks, Posters (Students & Professionals)** this month and further information will be circulated to GSN members when finalized.

Symposium sponsors are being sorted for Platinum, Gold, Silver, Bronze, Copper, Zinc and Ruby categories. **Kel Buchanan, Chris Dail, and Mike Power** are the points of contact to approach for symposium sponsorship discussions. Sponsors will be advertised on the symposium website and major sponsors on the event application where >1,300 geologists will register and pay for their attendance as well as during the event.

The Committee thanks Rangefront Mining Services for their in-kind support providing bookkeeping services for the Symposium, and to SRK who generously provide a monthly conference room.



There will be no monthly meeting held in December 2025, and the first 2026 meeting is scheduled for January 12. The temperature has dropped, and the days are getting shorter, stay safe while driving to and from home with the sun low on the horizon.

From the 27GSNS Symposium Steering Committee,

Regina Molloy (Reno) – Chairperson - [chairperson@gsnsymposium.org](mailto:chairperson@gsnsymposium.org)

Mark Travis (Elko) - Deputy Chairperson - [depchairperson@gsnsymposium.org](mailto:depchairperson@gsnsymposium.org)

Eli Turner – (Reno) Secretary - [secretary@gsnsymposium.org](mailto:secretary@gsnsymposium.org)

Christina Ricks (Elko) – Treasurer – [treasurer@gsnsymposium.org](mailto:treasurer@gsnsymposium.org)





# AGS PRESENTS: ARIZONA EXPLORATION AND MINING OUTLOOK

FRIDAY, NOVEMBER 14TH, 2025  
8AM-5PM

Join leading geologists and industry innovators for a dynamic one-day symposium exploring the past, present and future of mining in Arizona. From historic copper veins to current projects, we'll be diggin' into exploration, sustainability and much more.

**Where:** Hexagon | 40 E Congress St, Tucson, AZ

**Cost:** \$50/person | \$10/person for students | Speakers FREE

**Sponsorship Levels:** Molybdenum \$100-\$249 | Bornite \$250-\$499 | Turquoise \$500-\$999 | Silver \$1000-\$1999 | Gold \$2000+

## CONTACT INFO

Ann Pattison, AGS President  
[info@arizonageologicalsoc.org](mailto:info@arizonageologicalsoc.org)

## COMMITTEE

Larry Dykers & Ann Pattison  
Co-chairs: Grace Bombulum & J.D. Mizer

THANK YOU TO OUR SPONSORS!



AGS Website



FARADAY COPPER



Sponsorship  
Opportunities

## OTHER UPCOMING EVENTS

**November 3, 2025: UNR Geology Dept. Seminar Series.** UNR, Davidson Math & Science Room 103, Reno, NV, 4-5:15 PM, snacks and coffee provided. Please arrive 15 minutes early to socialize, 6:30 PM. Speaker: Bar Oryan, UCSD-Scripps, Title: "A tale of earthquakes and landscapes: What landscapes can tell us about subduction zone earthquake cycles." Open to the public.

**November 4, 2025: Arizona Geological Society Speaker Series.** Hexagon Mining Division Office, Tucson, AZ. 5:30 PM. Speaker: Camila Sojo & Hervé Rezeau, Title: "Ore Characterization, Spatial Distribution, and Genetic Implications of the Mineralization in the Filo del Sol Porphyry-Epithermal Cu-Au-Ag System, Central Andes (Argentina-Chile)." [Register](#).

**November 10, 2025: UNR Geology Dept. Seminar Series.** UNR, Davidson Math & Science Room 103, Reno, NV, 4-5:15 PM, snacks and coffee provided. Please arrive 15 minutes early to socialize, 6:30 PM. Speaker: Alex Lusk, USGS, Title: "The expression and mechanics of plate boundary-scale shear zones in the Lithospheric mantle." Open to the public.

**November 11, 2025: One-Day Short Course on "Geomembranes for Mining and Environmental Applications."** Colorado School of Mines, Golden, CO. Visit the event page to [register](#).

**November 13, 2025: AEG Great Basin Chapter meeting.** The J Resort 345, Reno, NV. 5:15 PM. Speaker: Baker Perry, State Climatologist; Title: "Insights from the Highest Weather Stations in the World." [RSVP](#).

**November 17, 2025: Northern NV SME Meeting,** Circus Circus Hotel, Mandalay Room, Reno, NV. Speaker: Ed Macha, Topic: To Be Announced." [RSVP](#)

**November 24, 2025: UNR Geology Dept. Seminar Series.** UNR, Davidson Math & Science Room 103, Reno, NV, 4-5:15 PM, snacks and coffee provided. Please arrive 15 minutes early to socialize, 6:30 PM. Speaker: Adam Kent, Oregon State University Title: *To Be Announced*. Open to the public.

**December 4, 2025: AIPG Exploration Round-up and Dinner Meeting.** Atlantis Casino, Reno, NV, 6 PM.

**December 7-8, 2025: SME Arizona Conference.** Westin La Paloma Resort, Tucson, AZ. Visit the event page to [register](#).

## Consider joining the MINING HISTORY ASSOCIATION

**Who We Are:** The Mining History Association (MHA) is an organization of individuals interested in the history of mining and metallurgy. We are an eclectic bunch of independent scholars, university professors, miners, metallurgists, geologists, mill men, retired mining industry personnel, historians, and more.

**What We Do:** The Mining History Association holds an annual conference in a historic mining area. Taking place the last week of May/first week of June, it consists of two days of mining history-related talks, field trips, and tours to mine sites. Next year's (2026) conference will be in the Tri-State district (Pittsburg, Kansas) with an underground tour scheduled for the Viburnum Trend. In 2027, we intend to visit Houghton, Michigan and the Keweenaw native copper deposits.

In addition, we publish a quarterly newsletter and an annual peer-reviewed journal. With respect to the latter, we are always interested in "slice of life" articles about living or working in historic mining camps. We also have history related awards and foster research grants in many aspects of mining history.

**Yearly membership: \$35/year; Conference cost: \$80** (exclusive of motel and dining/banquets).

Thank you for your consideration. —Paul Bartos, President-Elect MHA [mininghistoryassociation.org](http://mininghistoryassociation.org)



## Richard Allen Hipsley

*June 22, 1948 - July 15, 2025*

Richard was born in Altadena, Calif. and passed away at home in Dayton, Nev.

Richard was an avid reader and a talented writer. He played golf once a week and loyally tended his garden. He loved his family very much. He was a very thoughtful, loving and caring person.

Richard's kind and gentle 'Hippy Spirit' will be missed by all who knew him. In 1968, Richard joined the army and spent 1968-1969 in Vietnam.

In 1980, Richard attended University of Nevada, Reno and earned his bachelor's degree in Geology. His entire career was spent as an Exploration Geologist in search of gold. He loved it. He explored in Nevada, Oregon, Washington, Alaska, Canada, South America, Romania and China. Five summers were spent in remote camps with only helicopter access doing mineral reconnaissance exploration.

Richard started work for Barrick Gold Exploration in 1993 and in 1998 was assigned Barrick Project Geologist for the DEE project. And was responsible for the Arturo Gold Discovery in 2005.

Maybe 1 in a 1000 gold exploration geologist drill the initial discovery of ore body, remove it, perform the feasibility study and see it being mined.

In April 1989 he met his soul mate, Leanne Nelms from London Ontario while they were both on holiday in the Yucatan, Mexico. They married in December 1989.

Dyan Hipsley was born May 31, 1992, and Drew Hipsley January 19, 1994.

He was preceded in death by his parents, Betty and Fred Hipsley and brother, Edward Hipsley.

Richard is survived by Leanne (nee Nelms) his loving wife and soul mate of 36 years and his children, Dylan (Belan) and Drew. He was a beloved brother to Joyce Herman Lackey (Larry).





## JBA WORKS, INC.

Jo Beth Allen  
Geologist

### Professional Map & Data Graphics

GIS / CAD Drafting  
Technical Presentations & Graphic Design

Phone: 775-303-6818

JoBethAllen@sbcglobal.net

## TOM CARPENTER & DUSTIN NAPHAN

### CONSULTING GEOPHYSICISTS

(o) 775.849.9707  
(e) tcarpenter@gbis.com  
(o) 719.235.8591  
(e) dustin.naphan@gmail.com

*"Specializing in the  
gravity method."*



*Serving Mining in Nevada Since 1992*

**General Engineering Contractor**

**Drill Pads  
Road Building  
Reclamation  
Earthwork**

Office: 775-753-5832

Mobile: 775-934-1837

[www.legarza.com](http://www.legarza.com)

NV License #84449



### Geochemical & Environmental Analysis

(775) 356-0606 PHONE  
(775) 356-1413 FAX  
[info@aallabs.com](mailto:info@aallabs.com) EMAIL

1506 Glendale Ave.  
Sparks, NV 89431  
[www.aallabs.com](http://www.aallabs.com)

### FULL SERVICE

- Sample Pick-up
- Core & Prep Services
- Fire Assay
- ICP-OES +MS
- XRF, XRD, SEM
- CIC, C&S, DMA



## Rangefront Wheels is now High Grade Fleet Services

SAME HIGH-QUALITY TRUCK RENTALS & CUSTOMER SERVICE  
WITH A NEW NAME FOR THE FUTURE

EXPLORE A NEW LEVEL OF TRUCK RENTAL SERVICES  
**775-753-6605**



Pickup  
Truck Rentals  
with tough  
features for  
rugged work



Heavy-duty  
trucks, tow  
packages, &  
mine-ready  
available

**HighGradeFleet.com**

## EGC Ellis Geophysical Consulting

GIS Data Integration & Interpretation  
Survey Design, Quality Control & Processing

Robert B. Ellis, *Geophysicist*

California Registered Geophysicist, GP-1048  
Wyoming Professional Geologist, PG-2683

- Over 50 years of experience in mineral exploration geophysics
- 27 years as an independent geophysical consultant
- Experience in sediment- and volcanic-hosted and epithermal gold, porphyry copper, skarn, kimberlite, and carbonatite systems



Based in Reno, Nevada  
bellisegc@gmail.com  
775-338-2211

2ND SOUTH ROCK-BEYOND  
FENT, NEVADA-BUSCH

**RESPEC**

**MINERAL RESOURCES & RESERVES**  
Reno, Nevada, USA  
775-856-5700  
TECHNICAL REPORTING: NI43-101 // S-K1300 // JORC

**NEVADA-UTAH MINERAL EXPLORATION  
HIGHEST QUALITY GIS DATA**

MINERAL OCCURRENCES  
GEOLOGY  
GEOCHEMISTRY  
GEOPHYSICS  
CULTURE  
POLITICAL

**NEW:  
Updated Nevada  
Mineral Occurrences**

Great Basin GIS  
Spring Creek, NV  
www.greatbasinGIS.com  
jlaravie@frontiernet.net 775-397-1424





**BOREALIS**  
GEOSCIENCES

Structure, Tectonics, Basin Analysis

**John S. Oldow, Ph.D.**

200 East Troxell Road  
Oak Harbor, Washington 98277  
360-675-0461 (land)  
jsoldow@gmail.com  
www.borealisgeosciences.com

hardrockwheels@yahoo.com



**HARD ROCK WHEELS, INC.**

4WD Pickup Rentals

Howard L. Adams  
14756 Pine Knolls Ln.  
Reno, Nevada 89521  
(775) 852-2622  
Fax (775) 852-2075

Taiga Ventures  
2700 S. Cushman St.  
Fairbanks, AK 99701  
(907) 452-6631



**GeoSequel LLC**

Geologic Database Management

sales@geosequel.com  
(775) 742-2895

ORGANIZING SAMPLES  
DRILL TO MILL



**NORTH AMERICAN EXPLORATION**

GEOLOGY • CLAIM STAKING • GEOCHEM SAMPLING • LANDWORK



**DAVID MORRIS**

PRESIDENT • GEOLOGIST

895 N. MARSHALL WAY, SUITE A  
LAYTON, UT 84041

801.546.6453  
DMORRIS@NAE-XPLORATION.COM

**ADVANCED GEOSCIENCE, INC.**



Reno Office (775) 204-4740  
Los Angeles (310) 378-7480  
Please Visit Our Website:  
www.AdvancedGeoscience.com

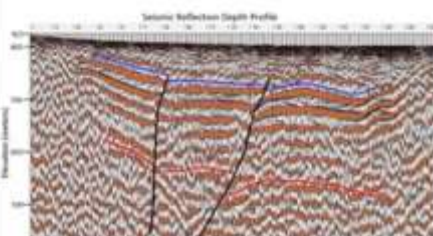


**Geophysical Exploration Services**

Seismic Reflection Data Recording, Processing, and Interpretation  
Seismic Refraction Tomography for Alluvium/Bedrock Profiling  
Gravity and Magnetics for Basin Depth and Mineral Exploration  
Electrical Resistivity Profiling- Deeper Transient EM and 2D ERT

**Geophysics for Geotechnical and Environmental Investigations**

Ground-Penetrating Radar  
Seismic Reflection for Fault and Geo Hazard Investigations  
Seismic Refraction P-Wave and MASW S-Wave Velocity Profiling  
Electrical Resistivity Surveys for Groundwater Investigations  
Geophysical Evaluation for Earth Structures- Dams and Tunnels



For Free Evaluation of  
Geophysical Applications  
Please Contact:

Mark Olson  
Principal Geophysicist  
California PG, PG, CHG

Mobile Telephone:  
(310) 617-8420

Email:  
molson@  
AdvancedGeoscience.com

- Claim Staking
- Soil & Rock Sampling
- Geologic Mapping
- Drill Planning & Management
- Core Logging
- Technical Reporting

**Contact Us:**

sgrocks@globalgeologica.com.au  
info@globalgeologica.com.au

+1 440 725 4144  
Stephanie Grocks, President



**Global Geologica  
USA Services**

globalgeologica.com.au  
Global Geologica  
Global Geologica  
Global Geologica



**Darrell Tweidt**  
cell: 775-397-0963

darrell@premierdrilling.com

**James A. Stephens**  
cell: 480-200-8300

james@premierdrilling.com

www.premierdrilling.com



## THE INDUSTRY STANDARD FOR CORE STORAGE

### CORE BOXES

HQ | NQ | PQ

*Setting the industry standard in  
core box solutions and reliable service.*

### CORE-BLOX

*Custom wooden core markers.*

### NEW COREBOX COVERS

*Protect your investment from the elements.  
Ask us about our custom corebox covers.*



LOCATIONS | SONORA MEXICO | IDAHO | NEVADA

**HOT-SHOT  
DELIVERY  
SERVICES  
AVAILABLE**

**COREBOX.COM**  
TO ORDER CALL: 208.762.1376



### Carlin Trend Mining Supplies & Service

369 - 5<sup>th</sup> Street, Elko, Nevada 89801  
775.778.0668 [www.carlin-trend.com](http://www.carlin-trend.com)

Claim Staking - Soil Sampling - Land Research  
Core Cutting - Mine Hazard Fencing - Reclamation  
Project Management - Geological Consulting  
Geology & Drafting Supplies - AutoCad & GIS

Temporary Employees in All Fields  
Sister store located in Superior, Arizona  
Copper Triangle Mining Services 520-689-5200



## WAYFINDER — DRILLING —

- Lightweight man-portable HYDRACORE diamond drill rigs.
- Access hard-to-reach sites with minimal environmental impact.
- More than 1 million feet drilled across the USA and Mexico.

Nevada Contractor's License: 0002752

Contact: Heather Kidd (604) 629-9427 [hkidd@almadexminerals.com](mailto:hkidd@almadexminerals.com)  
Korm Trieu (604) 629-9426 [ktrieu@almadexminerals.com](mailto:ktrieu@almadexminerals.com)

[www.wayfinderdrilling.com](http://www.wayfinderdrilling.com)



designed by freepik



Cell: +1-775-720-8894

**Donald G. Strachan**  
*Geologist M.S. CPG QP*

Economic Geology and Hydrogeology  
Mining - Exploration and Development

**Mineral Consulting  
Geologic Mapping  
Geochemical Surveys  
Discovery Drill Programs  
Deposit Development  
Project Management  
Resource Planning**

[www.geostrachan.com](http://www.geostrachan.com)  
[dgstrachan@yahoo.com](mailto:dgstrachan@yahoo.com)

Post Office Box 4046, Carson City, Nevada 89702



# MINING & EXPLORATION GEOLOGICAL SERVICES

SERVING IN ALASKA, CANADA, AND WESTERN U.S.



## CONTRACT GEOLOGY

- Geologists
- Geo Technicians
- Contract Labor
- Contract to Hire
- Direct Hire



## FIELD SERVICES

- Geophysics
- Claim Staking
- Soil Sampling
- Annual Filing
- Cartography
- AML Hazard Fencing



## TECHNICAL SERVICES

- 3D Geologic Modeling
- Data Management & Hosting
- Exploration Analysis & Targeting
- NI 43-101 Reports
- And More!



## TRUCK RENTALS

- Mine Site Ready
- Exploration
- Field Work

**CALL 775.753.6605 FOR A FREE ESTIMATE ON YOUR NEXT PROJECT**  
[WWW.RANGEFRONT.COM](http://WWW.RANGEFRONT.COM)



# BUREAU VERITAS MINERALS

ANALYTICAL LABORATORY SERVICES FOR  
THE EXPLORATION & MINING INDUSTRIES

- Assaying and Geochemical Analysis
- Onsite Laboratories
- Spectral Machine Learning
- Newly Renovated Sparks Facility
- Trade and High-Grade Analysis
- Environmental Testing

BVClientServicesNevada@bureauveritas.com  
605 Boxington Way, Suite 110 Sparks, NV 89434  
www.bvna.com/metals-minerals

ELKO	+1 775-778-5684	JUNEAU	+1 907-750-1734
FAIRBANKS	+1 775-296-0631	SPARKS	+1 775-359-6311



**BUREAU  
VERITAS**

**MOUNTAIN STATES**  
MINE DEVELOPMENT  
& RECLAMATION

- Road Building and Maintenance
- Reclamation and Reseeding
- Earthwork
- Drill Pads
- Water Hauling

Also Offer  
Trucking and  
Heavy Haul  
Services

Office: 208-800-7366  
Mobile: 775-307-8368  
Email: jh@mountainstatesmdr.com  
mountainstatesmdr.com

NV Contractor Lic. # 0090060  
ID Contractor Lic. # ROC-50663  
AZ Contractor Lic. # ROC-351296  
UT Contractor Lic. # 13853913-9501  
OR Contractor Lic. #250071

**PROPERTY to  
DISTRICT SCALE  
GEOLOGIC  
& ALTERATION  
MAPPING with  
MINERAL DEPOSIT  
TARGETING**

**PETER A. DILLES MSc. O.P. Economic Geologist**  
**(775) 972-7989** [pdilles@aol.com](mailto:pdilles@aol.com)

## Big Sky Geophysics

Clark Jorgensen, M.Sc.  
Geophysicist

*Field Work  
Processing  
Interpretations*

P.O. Box 353  
Bozeman, Montana 59771  
USA

Phone/Fax +1 (406) 587-6330  
Mobile +1 (406) 580-9718  
[clark@bigskygeo.com](mailto:clark@bigskygeo.com)

**For more details, my background, and case studies,  
Visit my webpage at [www.bigskygeo.com](http://www.bigskygeo.com)**



# GEOLOGICAL SOCIETY OF NEVADA



gsn@gsnv.org • www.gsnv.org  
Telephone (775) 323-3500  
Fax (775) 323-3599  
2175 Raggio Parkway, Room 107  
Reno, NV 89512 USA

## GSN NEWSLETTER AD PRICES per issue

**Business Card size (3 ½ X 2") = \$50.00**

**Quarter Page (3 ½ X 4 ¾") = \$150.00**

**Half Page (4 ¾ X 7 ½") = \$300.00**

**Full Page (7.5" X 10") = \$450.00**

## GSN TRAVELLING BACKPACK PICTURES

If you have a photo of your GSN Symposium backpack travelling with you to ANYWHERE, feel free to take a photo of it (with you in it or not) and email it to gsn@gsnv.org and we'll run your photo in this space.