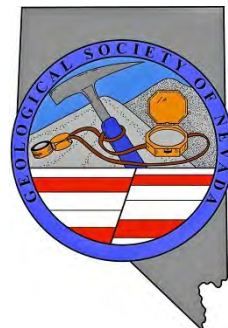




GEOLOGICAL SOCIETY OF NEVADA NEWSLETTER

Geological Society of Nevada, 2175 Raggio Parkway, Reno, NV 89512
(775) 323-3500 - Hours Monday -- Friday, 10 a.m. to 5 p.m.
Website: www.gsnv.org E-mail: gsn@gsnv.org



JANUARY 2026 ISSUE, Vol. 42, No. 1

Published monthly except June and July

PRESIDENT

Steven Weiss, Consultant, Geologist
siraweiss@outlook.com

VICE PRESIDENT,
David Boden, TMCC Emeritus
dboden@tmcc.edu

SECRETARY
Mandy Bengtson, SWCA
Mandy.bengtson@swca.com

TREASURER
Robert Kastelic, McEwen Mining
bob_kastelic@yahoo.com

MEMBERSHIP CHAIR
Christian Thomas, Geologist
christianthomasgeo@gmail.com

PUBLICATION CHAIR
Michael Say, Orogen Royalties, Inc.
michaelsay.geo@gmail.com

DIGITAL MEDIA CO-CHAIRS
Peter O'Byrne, Target Synthesis
Peter.Obyrne@outlook.com
Dakota Prudhomme, Zonge Intl.
dakota.prudhomme@zonge.com

GSN EXECUTIVE MANAGER
Laura Ruud, gsn@gsnv.org

GSN OFFICE MANAGER
Lauren Sankovitch,
GSNOfficeManager@gmail.com

GSN BOARD OF DIRECTORS

CHAIRMAN
David Caldwell

CURRENT GSN PRESIDENT
Steve Weiss

MOST RECENT PAST GSN PRESIDENT
Patty Capistrant

ELKO CHAPTER PRESIDENT
Sergey Konyshhev

WINNEMUCCA CHAPTER PRESIDENT
Eli Witte

SO. NEVADA CHAPTER PRESIDENT
Elizabeth MacDonald

CLASS A, 2024-2027
Robert Thomas
Ruth Carraher

CLASS B, 2025-2028
David Caldwell—CHAIR
Greg French

CLASS C, 2023-2026
Josh Bonde
Mark Travis

JAN. 8, 2026 THURSDAY

GSN WINNEMUCCA CHAPTER

The GSN Winnemucca Chapter meeting will be held at The Martin Hotel, 94 W. Railroad St., Winnemucca, NV. **Speaker:** Richard Dorman. **Title:** TBD. **Drinks at 6PM, Food at 6:30PM, Talk at 7PM.** **Sponsor: Diamond X Mine Services.** For more information, please contact Chapter President, Eli Witte at: ewitte@i80gold.com. Details on pg. 4.

JAN 13, 2026 TUESDAY

GSN SOUTHERN NEVADA CHAPTER

The GSN Southern Nevada Chapter will be holding a joint meeting with the Southern Nevada AEG Chapter at The Embassy Suites Las Vegas, NV. **Speaker:** Dr. David Kreamer. **Title:** "Update on Environmental Issues Dealing with Uranium Mining Near the Grand Canyon." **Drinks at 6PM, Food at 6:30PM, Talk at 7:15PM. Sponsors: BEC Environmental & Lightbox EDR. Dinner Cost is \$45. RSVP here BY TUESDAY, JANUARY 6TH.** For more information, please contact Chapter President Liz McDonald at: liz_macdonald@outlook.com. Details on pg. 5.

JAN. 15, 2026 THURSDAY

GSN ELKO CHAPTER

The GSN Elko Chapter meeting will be held at the Western Folklife Center, 501 Railroad St., Elko. **Starts at 6PM. Speaker:** Lauren Terry. **Title:** "Microtextural characteristics of adularia in banded quartz veins from the Midas low-sulfidation epithermal deposit, Nevada." **Sponsor: TonaTec Exploration.** Please contact Elko President, Sergey Konyshhev, sergey606@gmail.com for more information. Details on page 6.

JAN. 16, 2026 FRIDAY

GSN REGULAR MEMBERSHIP MEETING

The GSN meeting will be held at the Atlantis Hotel & Casino, Reno, NV. **Speaker:** Perseo Anaya, Orla Mining Ltd, **Title:** "South Carlin Complex Growth Trajectory Ahead of 2026 Construction." **Sponsor: Premier Drilling.** Bar @ 6PM, Dinner @ 6:30PM, Talk @ 7:15PM. Dinner cost is \$60. **PLEASE RSVP BY 5PM ON MONDAY, JANUARY 12TH.** Register for dinner online here: [RSVP/DINNER](#). Details on pg. 3.

GSN JANUARY MEETING SPONSOR



FROM THE PRESIDENT — JANUARY 2026
Steve Weiss
GSN President June 1, 2025-May 31, 2026



Hello members of the Geological Society of Nevada,

Happy New Year and wishing you all well for 2026! It seems odd to write those words in late December 2025, but we want to get this month's newsletter into your hands by January 2nd or thereabouts. Some of you know that I am easily confused, and often mess up, when arranging video conference meetings with folks in two, three or four different time zones, and especially if I happen to be in a time zone that is not Pacific (GMT-8). I bring this up because New Year greetings for January 1st are not in sync with GSN's new year which commences on June 1st and runs through May 31st. By tradition, however, GSN annual membership expires on September 30th each year, keyed to our monthly meetings. If you intend to be included in the annual GSN Membership Directory in February, please do not wait until January—please make sure you pay your membership dues by the prior October 1st. You can still renew now for inclusion in the Directory, but just to add clarity, if you join GSN, or renewed your membership in December or January for example, your membership expires the following September 30th, not one year after you paid. All this is to say, I encourage you to re-join if you have not already done so, whatever year it is. Dues are still \$50.

I look forward to our next monthly meeting on January 16, 2026, at the Atlantis Hotel and Casino. Mr. Perseo Anaya of Orla Mining will be speaking on progress at Orla's South Carlin project. Speakers and topics for February through May 2026 in Reno are also shown below.

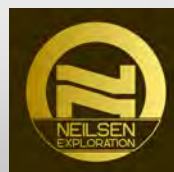
Date	Speaker	Topic	Affiliation
1/16/2026	Perseo Anaya	Piñon, Dark Star and so much more: South Carlin Complex update	Orla Mining
2/20/2026	Rob Selwood	Peraluminous critical-metal skarns in Alaska	Lost River Mining
3/20/2026	CREG Guest Lecturer	TBA	TBA
4/17/2026	Student Poster Competition	Graduate and Undergraduate Research Presentations	
5/15/2026	Paul Fix	Silicon – Merlin Gold-Silver Deposits, Southwest Nevada Volcanic Field	AngloGold Ashanti

Special thanks go out to **Envirotech Drilling**, **American Assay Laboratories**, and **Jentech Drilling Supply** for their generous sponsorship of the GSN Holiday Party on December 17th, and to **Steve Neilsen of Neilsen Exploration** and many others who donated the many fine auction and raffle items, and to the GSN Foundation volunteers who put it all together for one heck of a good party!

In closing, it is a pleasure to announce that Dr. Josh Bonde and Ruth Carraher have joined the GSN Board of Directors. Josh Bonde was elected by the Board to fill the late Dave Shaddrick's Class C position. Ruth Carraher was elected to fill the Class A position of John Watson who has stepped down. On behalf of the GSN, I convey our sincere thanks and appreciation to John Watson for his long and meritorious service, and offer a most hearty welcome to Josh and Ruth. Saludos!

—Steve Weiss

GSN wishes to thank our DECEMBER sponsors in Reno, Elko & Winnemucca:



GSN MEMBERSHIP MEETING—FRIDAY, JANUARY 16, 2026

TIME: Drinks @ 6PM, Dinner @ 6:30PM, Talk @ 7:15PM

WHERE: The Atlantis Hotel & Casino, S. Virginia St., Reno, NV

Sponsor: Premier Drilling

Please RSVP for dinner online by 5PM on Monday, January 12th.

Dinner is \$60. Register for dinner online here: [RSVP/DINNER](#).

GUEST SPEAKER:

**Perseo Anaya, Exploration Manager
Orla Mining Ltd**

TITLE:

“South Carlin Complex Growth Trajectory Ahead of 2026 Construction”



Abstract: Orla Mining Ltd. is progressing its initiatives at the Railroad, South Railroad, and Pony Creek Projects, situated within the extensive South Carlin Complex. Since the acquisition of GSV in 2022, the exploration programs have concentrated on converting mineral reserves and fostering project expansion through consistent investments in systematic drilling. This approach has yielded significant oxide intercepts beyond current pit designs and has advanced over 15 satellite targets, indicating potential for additional resource growth across the Company’s extensive landholdings in anticipation of production commencing in 2028.

The new Open Pit Oxide Mine in Nevada is currently in the final stages of permitting, with construction anticipated to commence in mid-2026 and initial production set for 2028. The mining plan involves the Pinion and Dark Star deposits, which together contain a total reserve of 1.6 million ounces (65.2 Mt at an average grade of 0.77 g/t Au), as documented in the 2022 Feasibility Study (an updated Feasibility Study is scheduled for release in the first quarter of 2026). The projected high-quality oxide growth will extend the mine life beyond the 10 years of planned production, which is supported by the latest results of the Pinion deposit extension (67.1 m at 1.06 g/t Au in hole PR25-05), the Dark Star deposit extension (22.6 m at 5.65 g/t Au in hole DS25-03), as well as other advancing targets such as Jasperoid Wash (13.7 m at 0.73 g/t Au and 18.3 m at 0.30 g/t Au in hole JW25-02), Bowl (18.3 m at 0.62 g/t Au in hole BW25-01), Pod-SH, and emerging targets like Firebox (24.4 m at 1.08 g/t Au in hole PR25-09) and Spike (38.1 m at 0.80 g/t Au in hole RR25-05).

The exploration campaign planned for 2026 is anticipated to extend the mine life, advance some satellite targets, and test innovative concepts to sustain a robust pipeline of near-surface oxide projects.





GSN Winnemucca Chapter Meeting

Thursday, Jan. 8, 2026

Drinks @ 6 PM, Food @ 6:30 PM, Talk @ 7 PM

The Martin Hotel, 94 W. Railroad St., Winnemucca, NV

SPONSOR: Diamond X Mine Services

Speaker: Richard Dorman

Title: *To Be Announced*

Scoop: Richard Dorman is a paleontologist from the 1880s who has come to the future to tell us about the fossils he's collected from the Mesozoic.

(Richard Dorman is actually a regular GSN member with a background in theater who has a period-accurate 1880s costume. Have I mentioned that the Winnemucca chapter is the best chapter in GSN?)



If you have any questions, please contact Winnemucca Chapter President Eli Witte at ewitte@i80gold.com.



GSN SOUTHERN NEVADA CHAPTER NEWS



Joint GSN – AEG Meeting! Please note time/date and you must RSVP!

Tuesday, January 13th

6-8 PM, Dinner 6:30 PM, talk 7:15 PM

Embassy Suites Las Vegas, 4315 University Center Drive (<https://maps.app.goo.gl/URk48SF4t4Pmiz8W6>)

Cost is \$45 per person.

GSN Members, *please register by JANUARY 6TH* under the AEG Members rate using the link here: <https://www.aegsnv.org/rsvp>

Sponsors: BEC Environmental, Inc. & Lightbox EDR

Speaker: David Kreamer, Ph.D.

Title: “Update on Environmental Issues Dealing with Uranium Mining Near the Grand Canyon”

Abstract: Grand Canyon National Park exemplifies a challenge facing many Western National Parks in the United States of America. Specifically, increased tourism, pumping of groundwater for increased visitors, and mining activities outside the Park boundaries have the potential to affect the quality and quantity of spring flow within Parks. Tracking, tracing, and dating groundwater using water quality parameters indicates hydrologic connection between these activities and the springs, helping managers to predict the effects of groundwater extraction and mining activities. Springs in the Canyon support a multitude of groundwater-dependent ecosystems, recreational activities that are a mainstay of the economy of Northern Arizona, and traditional Native American cultural and religious values. For the last two years, Pinyon Plains Uranium Mine has operated in a geologic formation called a breccia pipe less than nine miles from the South Rim of the Grand Canyon. The mining industry in the past has insisted there was no appreciable groundwater in the upper aquifer associated with the projected subsurface mining depths, that these underground mining areas were isolated from the deeper Redwall-Muav regional aquifer, and that the dip of the geologic strata was to the southwest (away from the Canyon) and all groundwater would flow in that direction. Multiple lines of recent evidence suggest that these assertions are not the case, and that the subsurface area perturbed by mine is in direct hydrologic contact with the regional deep aquifer and associated vulnerable springs.

Biography: David Kreamer, Ph.D. is a Professor Emeritus of Geoscience. Dave currently serves as Past President of the International Association of Hydrogeologists (IAH) and is a past President of the Universities Council on Water Resources. Dave’s research includes work on water and international security, maintaining quality water supply for people and ecosystems particularly in economically developing regions, and combating environmental contamination.



LIGHTBOX | EDR

For more information, please contact Southern Nevada President, Liz MacDonald at: liz_macdonald@outlook.com.



GSN ELKO CHAPTER NEWS



The GSN Elko Chapter invites you to their January Meeting!

Thursday, January 15, 2026, Food & Drinks @ 6pm

Western Folklife Center, 501 Railroad St., Elko, NV

SPONSOR: TONATEC EXPLORATION

Speaker: Lauren Terry

Title: “Microtextural characteristics of adularia in banded quartz veins from the Midas low-sulfidation epithermal deposit, Nevada”

Abstract: High-grade ores at the Miocene Midas low-sulfidation epithermal deposit in northern Nevada are confined to crustiform quartz veins containing abundant adularia. Micro-X-ray fluorescence elemental mapping reveals that adularia is a common gangue mineral occurring in colloform bands, bands showing bladed textures, and bands with dendritic terminations. The adularia aggregates have delicate shapes and are comprised of stacked, submillimeter crystals hosted by fine-grained quartz. The textural evidence suggests that the adularia aggregates originally formed within a gel-like noncrystalline silica matrix that subsequently transformed into quartz. This indicates that the adularia did not precipitate in open space along the vein walls. Correlative microscopy, involving scanning electron microscopy-based automated mineralogy and optical petrography, demonstrates that bands containing abundant adularia are not the primary host to ore minerals. The ore minerals occur within different bands in the crustiform veins, implying that adularia and ore mineral precipitation did not always occur at the same time. It is hypothesized here that fluid flow at Midas involved intermittent short-lived events of fluid flashing, causing rapid solute supersaturation in the liquid. During each flashing event, different amounts of vapor were produced along a given vein. Compositional differences between adjacent bands in the crustiform quartz veins may, therefore, be linked to variations in the amount of vapor formed during each flash event.

Bio: Lauren Terry obtained her M.Sc. in Economic Geology in 2018. She earned her PhD from the Colorado School of Mines in 2025. She has consulted on projects in Japan, the Western US, and British Columbia for juniors, mid-tiers, and majors. She is involved in numerous professional organizations, including the Society of Economic Geologists (SEG) and the Society for Geology Applied to Mineral Deposits (SGA). Lauren has also worked for the Association of American State Geologists (AASG) and the American Institute of Professional Geologists (AIPG). She is currently the Conference Chair of the Denver Mineral Exploration Symposium (DMES), an event she helped build from the ground up. Lauren is continuing her research pursuits as a postdoc while mentoring students at Mines as the incoming manager of the Center to Advance the Science of Exploration to Reclamation in Mining (CASERM). This year, Lauren started her own non-profit dedicated to solving the workforce crisis in mining.

Please contact Elko Chapter President Sergey Konyshov if you have any questions.

Sergey606@gmail.com



www.tonatec.com
801.446.2400

INTERESTED IN JOINING GSN LEADERSHIP?

All-call for GSN Members interested in standing for election to serve in leadership positions on GSN's Boards and/or an Officer as we chart a course of growth for the geosciences in the Great Basin and beyond.



EXECUTIVE COMMITTEE/CHAPTER OFFICER

The GSN Executive Committee (EC) is comprised of the President, Vice President, Secretary, Membership Chair, Treasurer, Digital Media Chair, and Publications Chair. The EC meets monthly and is responsible for the daily affairs of the GSN, while the Chapter ECs (Elko, Southern NV, Winnemucca) manage the daily affairs of their respective Chapters. Any current GSN Member with an interest and bandwidth can apply to be an Officer.

The slate of EC Officers is put together by the Nominating Committee and reviewed by the BOD. The EC election is conducted via electronic ballot near the end of the fiscal year (April/May) and candidates are elected via simple majority. The Chapter ECs follow similar guidelines for nominations and elections per their bylaws. All new officers begin their term in the new fiscal year (June 1).

BOARD OF DIRECTORS

GSN is a 501(c)(6) Non-Profit Corporation with an 11-member **Board of Directors (BOD)** overseeing governance, advising, and steering on behalf of the Society's Members. The GSN BOD is composed of 6 Directors elected by the sitting BOD, serving in 3 Classes of staggered 3-year terms. The remaining 5 Board seats are filled ex-officio by the Member-elected Presidents of the Winnemucca, Elko and Southern Nevada Chapters as well as the Reno mothership.

The Board of Directors manages GSN's affairs, including institutional continuity, budgeting, investment oversight, communication, and bylaw amendments. They hold 4 quarterly meetings and participate on specific committees (Audit, Fiscal, Personnel Management, Policy, Nominating, and Foundation). Per the GSN Constitution, Elected Board members *must have served as a past officer (of GSN or GSN Chapters), cannot be a current officer, and must be current GSN Members.*

FOUNDATION BOARD

GSN Foundation is the 501(c)(3) charitable arm of the Society and is searching for candidates to join its Board for a minimum of one-year terms as it directs the use of funds for scholarships, educational field trips, geological mapping, and other projects that fit the Foundation's charitable mission. Duties include attending 4 quarterly meetings and participation on committees. Any current GSN Member with an interest and bandwidth can apply.

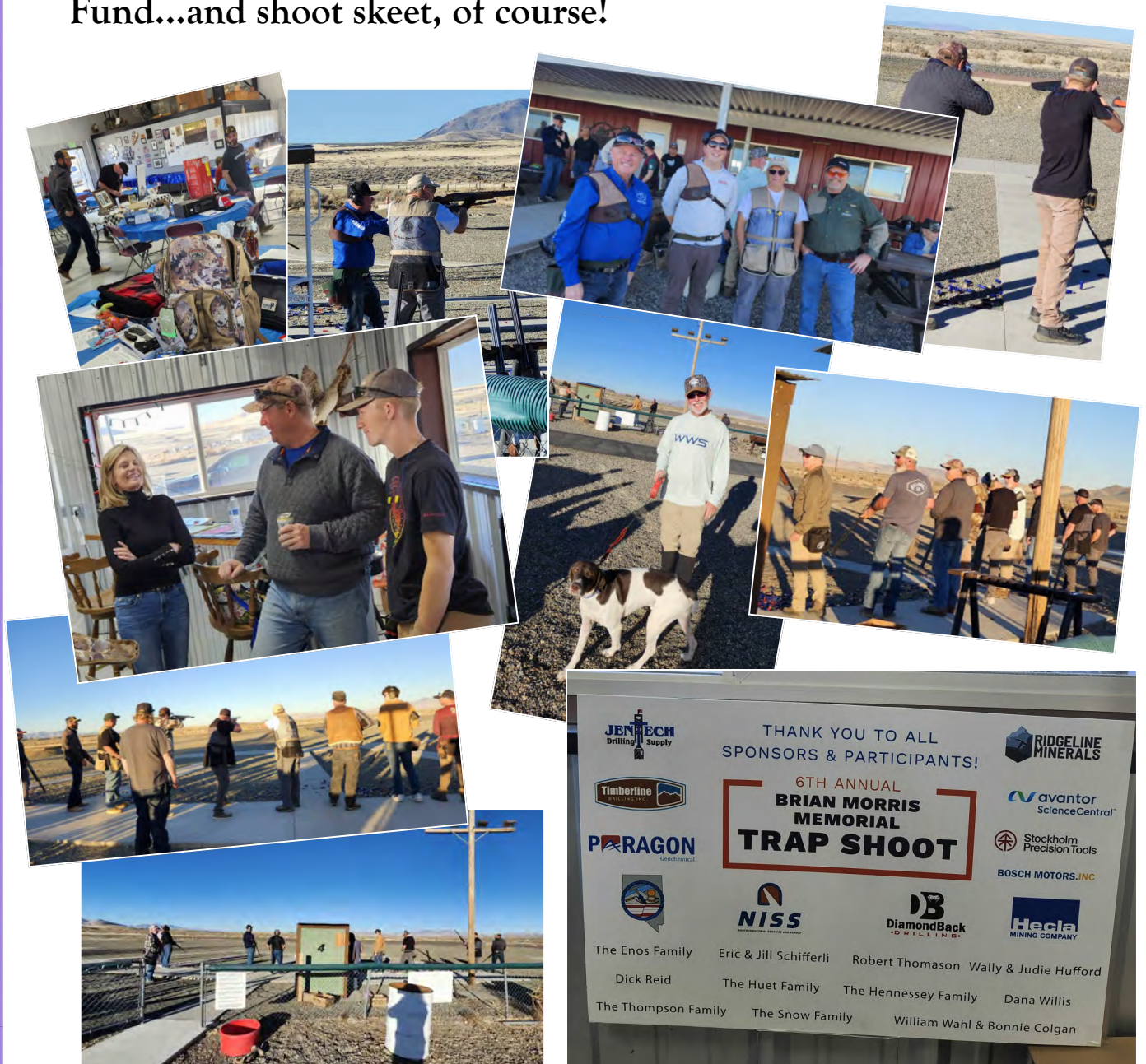
These positions are proposed by the Foundation BOD and voted on annually by the GSN BOD as the sole Member of the Foundation. A full slate of Directors is proposed annually so anyone with a passion for giving back and promoting the geosciences in Nevada is a natural fit. Foundation Board terms begin on June 1.

Interested parties should email the GSN Office Manager (gsn@gsnv.org) on behalf of the Executive and Nominating Committees and Chapters to be added to the pool of qualified candidates for consideration. We are happy to discuss one-on-one, and we encourage you to be part of GSN's succession planning with our senior leadership available to mentor and transfer institutional knowledge over the next 5-10 years. For more detailed information, refer to the Constitution and Bylaws on the GSN website (www.gsnv.org).

6th Annual Brian Morris Trap Shoot

November 1st, 2025

Thanks to our generous sponsors and everyone who came out to help raise funds for the Brian Morris Scholarship Fund...and shoot skeet, of course!



GSN HOLIDAY PARTY PICTURES FROM RENO, AND ELKO, DECEMBER 2025

(Please send us your pictures to share in the February Newsletter!)



NEWS FROM THE GSN FOUNDATION

January 2026 | Bob Felder



Another outstanding holiday fundraiser was had and we couldn't have done it without the continuing generous support of our sponsors and members. Please join me in an enthusiastic thank you to:

ENVIROTECH DRILLING—for their long-time and incredibly generous sponsorship of our bar.

AMERICAN ASSAY LABS & JENTECH DRILLING SUPPLY—for sponsoring the delicious carving station.

NEILSEN EXPLORATION—for their donations of high-grade mineral specimens for auction.

PARAGON GEOCHEMICAL—for their continued help storing donations for the event.

And lastly, thank you to all of our members who attended and generously supported the fundraiser.

Stay tuned for the Foundation Newsletter later this month!





2027 Geological Society of Nevada Symposium

April 22 – May 1, 2027 | Sparks (Reno), NV

REQUEST FOR 2027 GSNS ABSTRACTS & PROPOSALS

Submission deadline: March 1, 2026 at 11:59 PM PST

For more details, visit: www.gsnsymposium.org
Refer Abstracts and Proposals web page



2027 GSN Symposium (27GSNS)

Symposium Event Dates: Thurs. April 22—Sat. May 1, 2027

Location: The Nugget Casino, Reno/Sparks, Nevada

Theme: Ore Deposits of the Great Basin – Key to America's Mineral Independence

gsnsymposium.org

We are now calling for Speakers, Papers and Posters

Theme: Ore Deposits of the Great Basin – Key to America's Mineral Independence

UPDATE: The Symposium is **OPEN** and is calling for **SPEAKERS, PAPERS, POSTERS – PROFESSIONAL** and **POSTERS – STUDENT**. Registration closes March 1, 2026. Refer the symposium website and navigate to the Abstracts and Proposals web page for details.

SEEKING SYMPOSIUM SPONSORS – contact **Kel Buchanan, Chris Dail and Mike Power** and gain exposure to >1,300 geologists that will attend the symposium event, get in early to avoid disappointment as some categories are limited. Categories include Platinum, Gold, Silver, Bronze, Copper, Zinc and Ruby.

We thank SILVER RANGE RESOURCES LTD for their symposium sponsorship of \$6,000:

SILVER RANGE IS A PRECIOUS METAL PROSPECT GENERATOR WORKING IN THE SOUTHWEST UNITED STATES.



The Committee thanks **Rangefront Mining Services** for their in-kind support of providing bookkeeping services for the Symposium, and to **SRK Consulting** who generously provide a monthly video conference room.

On behalf of the symposium committee, we wish all GSN members a wonderful New Year celebration 2026.

From the 27GSNS Symposium Steering Committee,

Regina Molloy (Reno) – Chairperson - chairperson@gsnsymposium.org

Mark Travis (Elko) - Deputy Chairperson - depchairperson@gsnsymposium.org

Eli Turner – (Reno) Secretary - secretary@gsnsymposium.org

Christina Ricks (Elko) – Treasurer – treasurer@gsnsymposium.org



Mining Activity Update

November 2025, Mike Brady

LMB Brady@aol.com

NEVADA

Wheaton Precious Metals Corp. announced that it acquired 8.0% of the payable gold up to 300,000 ounces and 6.0% of the payable gold thereafter from the Spring Valley Project of Waterton Gold Corp. for \$670,000,000 cash over several years. (resource = 89,098,000 tonnes @ 0.69 gpt Au measured+indicated) *Press Release: November 6*

Coeur Mining Inc. announced that it offered to acquire New Gold Inc. through a 0.4959 share Coeur/1.0 share New Gold exchange basis valuing New Gold at \$7,000,000,000. *Press Release: November 3*

Scorpio Gold Corp. announced that recent drill results at the Manhattan Project include 176.78-194.92 meters @ 1.52 gpt Au (25MN-21); 119.66-135.38 meters @ 0.46 gpt Au (25MN-22); 177.39-86.39 meters @ 1.93 gpt Au (25MN-24) and 150.82-164.74 meters @ 0.88 gpt Au (25MN-25). (resource = 18,343,000 tonnes @ 1.26 gpt Au inferred) *Press Release: November 24*

Western Exploration Inc. announced that recent drill results at the Aura/Tomasina Project include 288.04-295.66 meters @ 0.66 gpt Au, 13.3 gpt Ag (LUG466) and 292.61-336.81 meters @ 0.38 gpt Au, 1.7 gpt Ag (LUG467). (resource @ Dobie George = 13,662,000 tonnes @ 0.90 gpt Au indicated) *Press Release: November 17*

Sun Silver Ltd. announced that recent drill results at the Maverick Springs Project include 160.02-300.23 meters @ 25.8 gpt Ag, 0.53 gpt Au (MR25-230) and 178.92-281.06 meters @ 72.4 gpt Ag, 0.38 gpt Au (MR25-250). (resource = 218,500,000 tonnes @ 42.2 gpt Ag, 0.31 gpt Au inferred) *Press Release: November 26*

Hecla Mining Co. announced that recent drill results at the Midas Project include 355.1-356.4 meters @ 32.4 gpt Au, 20.5 gpt Ag (DMC-461) and 321.6-322.8 meters @ 4.44 gpt Au, 3.4 gpt Ag (DMC-462). (resource

= 88,200 tonnes @ 13.65 gpt Au, 187.7 gpt Ag measured+indicated) *Press Release: November 24*

James Bay Minerals Ltd. announced that recent drill results at the Independence Project include 161.5-187.4 meters @ 0.5 gpt Au, 11 gpt Ag (JBRC011); 100.6-112.8 meters @ 0.4 gpt Au, 19 gpt Ag (JBRC012); 0-4.6 meters @ 0.6 gpt Au, 53 gpt Ag (JBRC014) and 13.7-15.2 meters @ 0.3 gpt Au, 7 gpt Ag (JBRC015). (resource = 23,176,000 tonnes @ 0.4 gpt Au, 40 gpt Ag indicated) *Press Release: November 6*

Ridgeline Minerals Corp. announced that recent drill results at the Selena/Chinchilla Project include 605.3-630.9 meters @ 3.9 gpt Ag, 0.01 gpt Au (SE25-52A) and 957.8-975.2 meters @ 6.0 gpt Ag, 0.22 gpt Au (SE25-53). *Press Release: November 4*

Nevada King Gold Corp. announced that recent drill results at the Atlanta Project include 103.6-109.7 meters @ 0.10 gpt Au, 6.7 gpt Ag (AT25SP-34); 147.9-189.0 meters @ 0.11 gpt Au, 16.1 gpt Ag (AT25SP-37); 140.2-189.0 meters @ 0.11 gpt Au, 8.5 gpt Ag (AT25SP-38) and 80.8-150.9 meters @ 0.20 gpt Au, 4.0 gpt Ag (AT25SP-41). (resource = 27,710,000 tonnes @ 1.14 gpt Au, 9.7 gpt Ag measured+indicated) *Press Release: November 10*

Getchell Gold Corp. announced that recent drill results at the Fondaway Canyon Project include 193.8-316.4 meters @ 1.4 gpt Au (FCG25-33); 171.4-222.3 meters @ 2.1 gpt Au (FCG25-34) and 195.0-220.3 meters @ 2.0 gpt Au (FCG25-35). (resource = 13,518,000 tonnes @ 1.49 gpt Au indicated) *Press Release: November 10*

Westward Gold Inc. announced that recent drill results at the Toiyabe Hills Project include 463.3-474.0 meters @ 0.94 gpt Au (CF25-04). (resource = 4,523,000 tonnes @ 1.19 gpt Au inferred) *Press Release: November 5*

Thomas Nevius Westervelt

A Legend Lives On: Words to honor the adventurous life of Thomas Nevius Westervelt | May 4, 1945 - September 28, 2025

You may have noticed the world become a little dimmer on the morning of September 28th, 2025. Thomas (Tom) Nevius Westervelt began what he had always referred to as his "last great adventure." He spent 80 years exploring this beautiful planet as a geologist, a student, a professor, a husband, a father, a collector, an animist, a storyteller, and most recently a grandfather to Jasper Inti Arteaga-Westervelt.

From his early years on Everbreeze family farm in Bedminster, New Jersey, through his academic studies at Middlebury College and the University of Wyoming, and his professional career and time spent with family in the La Plata and San Juan Mountains of southwestern Colorado, Tom became one of the most brilliant, eclectic, generous, curious, and loving souls this world has known. He followed his passions for rocks and minerals, for ancient cultures, for wild places forgotten by the bustle of the modern world, bringing back the most extraordinary stories to share, teach, and inspire others.

In the early 1980s, Tom had the incredible fortune of meeting and marrying a phenomenal woman who helped him rediscover empathy and compassion after a challenging chapter of life, having been drafted into the army during the Vietnam War and having had a short-lived first marriage. Janet (Jan) Cogswell Westervelt provided unwavering support for her husband. They both invested their hearts, souls, and countless hours into creating Tom's geology classes at Fort Lewis College for nearly 25 years, with the aim of giving students the best education possible in structural geology, tectonics, and ore deposits, and providing some of the most memorable field camps in the history of the FLC Geology program. Tom often demanded more from his students because he could see their potential before they could. He transferred knowledge and built confidence in students taking his courses. An educator at heart, his impassioned lectures captivated his students. Many of his students--motivated by his wisdom and zeal--pursued wildly successful careers in mining and geology across the country and the world. Tom later spent time working as a consulting geologist alongside many of his former students for gold mining companies nationally and internationally and teaching short courses to train economic geologists in the Western U.S. He had a profound and lasting impact on a number of his students and their highly successful careers, leading to lifelong friendships.

Tom always said the happiest moment of his life was when his daughter, Megan Anne Westervelt, was born in 1987. He began investing his unconditional love in raising Megan as a curious child who respected and studied nature; a capable and independent teenager who could change her own oil and confidently fire a gun; and an environmentally conscious adventure companion. He truly taught her what the concept of "adventure" meant. Near-death experiences chased Tom throughout his lifetime: lungs failing repeatedly at birth, multiple lightning strikes on mountain tops, negotiations with Viet Cong soldiers, grizzly bear encounters in British Colombia, and plans gone terribly awry while biking, canoeing, and rock climbing. Whether he evaded death through luck or wit, it simply wasn't his time yet. There was always room for one more adventure.

Tom was the kind of person with whom you could just as easily enjoy watching action films or romantic comedies. He cared deeply for his friends, sharing weekly dinners and long phone conversations. He cherished family traditions, especially leaf-catching every



autumn. He adored artistic dance and spirited music. He relished in delicious cuisine and museum exhibitions. His suitcase was rarely unpacked before he was off to see another world wonder. From the High Place of Sacrifice in Petra, Jordan, to the end of the world in Ushuaia, Argentina, he always insisted on taking the road less traveled by, and he never once regretted it.

When Tom was diagnosed with pancreatic cancer earlier this year, he remained a fighter. When his tumor showed no signs of diminishing with intensive treatment, Tom courageously chose to begin his last great adventure from the comfort of his own home. Even then, he never gave up on his love for adventure. He took one last journey through his beloved San Juan Mountains. Basking in the fresh autumn air, peering out the window at the golden Aspens and red-stained slopes, Tom was accompanied by family, friends, and students from years past as he summited Corkscrew Pass between Silverton and Ouray one final time. He passed peacefully at home surrounded by family one week later. He had been looking so forward to reuniting with Jan, who passed away in December 2019; there is no doubt they are continuing their last great adventure together now.

If you knew Tom, you know he would want you to live passionately above all else. Honor him with your own adventures. Learn about the rocks around you. Toast to his life mantra, "Let's see what happens." Make sure that when your last sunset comes, you can say that you have truly lived.

Tom's daughter Megan and his son-in-law, Josue Arteaga Torres, would like to extend profound gratitude to Tom's long-time caregivers, Laura and Pam, as well as family friends and extended family, for showering Tom with so much love and support during both the joyful moments and the challenging times leading up to his passing.

A Celebration of Life for Tom will be held next autumn just as the leaves are beginning to reveal their golden splendor. All who knew and loved Tom are welcomed. Details will be published closer to the date. Contributions in Tom's honor towards one of his passionate causes can be made at next year's celebration.

[Published by The Durango Herald.](#)

OTHER UPCOMING EVENTS

Spring 2026: UNR Geology Dept. Seminar Series. Watch the [department seminar page](#) for the new schedule for the Spring 2026 semester. Free and open to the public.

January 6, 2026: Arizona Geological Society Speaker Series. Hexagon Mining Division Office, Tucson, AZ. 5:30 PM MST. Speaker: P. Kyle House, Arizona Geological Survey. Title: "Corridor of Cataclysm: The Perilous Geologic Journey of the Owyhee River." [Register](#).

January 8, 2026: AEG Great Basin Chapter meeting. The J Resort, Reno, NV. 5:15 PM. Speaker: Erielle Cushing, Broadbent Project Scientist. Title: "PFAs in Nevada's Water." [RSVP](#).

January 26, 2026: Northern NV SME Meeting, Circus Circus Hotel, Mandalay Room, Reno, NV. Speaker: Carl Nesbitt. Title: Copper Study. [RSVP](#)

February 2-5, 2026: Nevada Water Resources Association (NWRA) Annual Conference. Tuscany Suites & Casino, Las Vegas, NV. More information [can be found here](#).

MINERAL PROPERTY FOR SALE/LEASE

Epithermal/volcanogenic Ag-Au resource located in northwest U.S., contains 4.25 million tons of 2.30 oz/t Ag and 0.035 oz/t Au defined with 105 core and reverse circulation drilling.

Investigations outline additional targets. Interested in sale or lease to a well-funded mining company.

Contact Doug McFarland:
mcfarlandgeo@gmail.com

GEO-TRIVIA FOR A CAUSE

Test your geologic knowledge and help send UNR's Society of Economic Geologists (SEG) Student Chapter on an economic geology field trip to Central Mexico in May of 2026!

Geology-themed Trivia Night
Wednesday, January 28th, 6:30-8PM
The Village Well Taproom, Reno, NV

All industry professionals, undergraduate and graduate students, and faculty members are encouraged to participate and work in teams. If there's enough interest, the hope is to make it a recurring event!

Questions will come from all areas of Geology (e.g., Geophysics, Geomorphology, Petrology, Mineralogy, etc.) and will vary in difficulty. Have suggestions for topics? Fill out the [Google Form](#) with your ideas!

Tickets will be sold at the door. If you have any questions, please reach out to UNR-SEG President Brock Moody (brockmoody@unr.edu).

Thank you for your support for students!



Cell: +1-775-720-8894

Donald G. Strachan

Geologist M.S. CPG QP

Economic Geology and Hydrogeology

Mining - Exploration and Development

**Mineral Consulting
Geologic Mapping
Geochemical Surveys
Discovery Drill Programs
Deposit Development
Project Management
Resource Planning**

www.geostrachan.com

dgstrachan@yahoo.com

Post Office Box 4046, Carson City, Nevada 89702



RANGEFRONT

MINING & EXPLORATION GEOLOGICAL SERVICES

SERVING IN ALASKA, CANADA, AND WESTERN U.S.



CONTRACT GEOLOGY

- Geologists
- Geo Technicians
- Contract Labor
- Contract to Hire
- Direct Hire



FIELD SERVICES

- Geophysics
- Claim Staking
- Soil Sampling
- Annual Filing
- Cartography
- AML Hazard Fencing



TECHNICAL SERVICES

- 3D Geologic Modeling
- Data Management & Hosting
- Exploration Analysis & Targeting
- NI 43-101 Reports
- And More!



TRUCK RENTALS

- Mine Site Ready
- Exploration
- Field Work

CALL 775.753.6605 FOR A FREE ESTIMATE ON YOUR NEXT PROJECT

WWW.RANGEFRONT.COM

BUREAU VERITAS MINERALS

ANALYTICAL LABORATORY SERVICES FOR
THE EXPLORATION & MINING INDUSTRIES

- Assaying and Geochemical Analysis
- Onsite Laboratories
- Spectral Machine Learning
- Newly Renovated Sparks Facility
- Trade and High-Grade Analysis
- Environmental Testing

BVClientServicesNevada@bureauveritas.com
605 Boxington Way, Suite 110 Sparks, NV 89434
www.bvna.com/metals-minerals

ELKO	+1 775-778-5684	JUNEAU	+1 907-750-1734
FAIRBANKS	+1 775-296-0631	SPARKS	+1 775-359-6311



MOUNTAIN STATES
MINE DEVELOPMENT
& RECLAMATION

- Road Building and Maintenance
- Reclamation and Reseeding
- Earthwork
- Drill Pads
- Water Hauling

Also Offer
Trucking and
Heavy Haul
Services

Office: 208-800-7366
Mobile: 775-397-8368
Email: jd@mountainstatesmdr.com
mountainstatesmdr.com

NV Contractor Lic. # 0090260
ID Contractor Lic. # RCE-50661
AZ Contractor Lic. # ROC-351296
UT Contractor Lic. # 13893913-5501
OR Contractor Lic. #250071

**PROPERTY to
DISTRICT SCALE
GEOLOGIC
& ALTERATION
MAPPING with
MINERAL DEPOSIT
TARGETING**

PETER A. DILLES MSc. Q.P. Economic Geologist
(775) 972-7989 pdilles@aol.com

hablo Español

Big Sky Geophysics

Clark Jorgensen, M.Sc.
Geophysicist

Field Work
Processing
Interpretations

P.O. Box 353
Bozeman, Montana 59771
USA

Phone/Fax +1 (406) 587-6330
Mobile +1 (406) 580-9718
clark@bigskygeo.com

**For more details, my background, and case studies,
Visit my webpage at www.bigskygeo.com**

JBA WORKS, INC.

Jo Beth Allen
Geologist

Professional Map & Data Graphics

GIS / CAD Drafting
Technical Presentations & Graphic Design

Phone: 775-303-6818 JoBethAllen@sbcglobal.net

TOM CARPENTER & DUSTIN NAPHAN

CONSULTING GEOPHYSICISTS

(o) 775.849.9707 *"Specializing in the*
(e) tcarpenter@gbis.com *gravity method."*
(o) 719.235.8591
(e) dustin.naphan@gmail.com



Serving Mining in Nevada Since 1992

General Engineering Contractor

Drill Pads
Road Building
Reclamation
Earthwork

Office: 775-753-5832

Mobile: 775-934-1837

www.legarza.com

NV License #84449



Geochemical & Environmental Analysis

(775) 356-0606 PHONE
(775) 356-1413 FAX
info@aallabs.com EMAIL

1506 Glendale Ave.
Sparks, NV 89431
www.aallabs.com

FULL SERVICE

- Sample Pick-up
- Core & Prep Services
- Fire Assay
- ICP-OES +MS
- XRF, XRD, SEM
- CIC, C&S, DMA

Leading Provider of Analytical Geochemistry Services



right solutions.
right partner.

via an integrated global network of
laboratories delivering trusted results
and exceptional client service.



Fire
Assay



ICP-MS



Hyperspectral
Mineralogy



ALS Geochemistry App
Track your samples in real time



ClientServicesUSA@alsglobal.com • +1 775 356 5395

alsglobal.com/geochemistry

EGC Ellis Geophysical Consulting

Survey Design • QC • Data Integration & Processing
Geologically Based Interpretation

Robert B. Ellis

Geophysicist

Cell (775) 338-2211

bellisegc@gmail.com

9528 Xanthos Lane • Reno, Nevada 89521 USA

CA Reg. GP-1048 • WY Reg. PG-2683



210 SOUTH ROCK BLVD.
RENO, NEVADA 89523

MINERAL RESOURCES & RESERVES

Reno, Nevada, USA
775-856-5700

TECHNICAL REPORTING: NI43-101 // S-K1300 // JORC

FOREMOST DRdrills



— Sales, Service and Parts

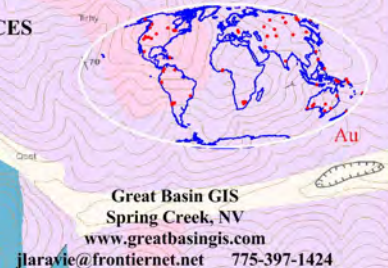
✉ fmesales@foremost.ca

☎ 1.800.661.9190 | www.foremost.ca

NEVADA-UTAH MINERAL EXPLORATION HIGHEST QUALITY GIS DATA

MINERAL OCCURRENCES
GEOLOGY
GEOCHEMISTRY
GEOPHYSICS
CULTURE
POLITICAL

NEW:
Updated Nevada
Mineral Occurrences



Great Basin GIS
Spring Creek, NV
www.greatbasinGIS.com
jlarvie@frontiernet.net 775-397-1424

BOREALIS GEOSCIENCES

Structure, Tectonics, Basin Analysis

John S. Oldow, Ph.D.

200 East Troxell Road
Oak Harbor, Washington 98277
360-675-0461 (land)
jsoldow@gmail.com
www.borealisgeosciences.com

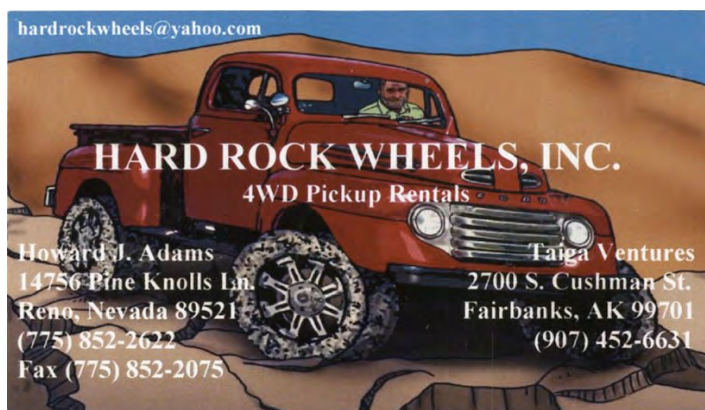
hardrockwheels@yahoo.com

HARD ROCK WHEELS, INC.

4WD Pickup Rentals

Howard J. Adams
14756 Pine Knolls Ln.
Reno, Nevada 89521
(775) 852-2622
Fax (775) 852-2075

Taiga Ventures
2700 S. Cushman St.
Fairbanks, AK 99701
(907) 452-6631





GeoSequel LLC
Geologic Database Management
sales@geosequel.com
(775)742-2895

ORGANIZING SAMPLES
DRILL TO MILL



ADVANCED GEOSCIENCE, INC.



Reno Office (775) 204-4740
Los Angeles (310) 378-7480
Please Visit Our Website:
www.AdvancedGeoscience.com



Geophysical Exploration Services

Seismic Reflection Data Recording, Processing, and Interpretation
Seismic Refraction Tomography for Alluvium/Bedrock Profiling
Gravity and Magnetics for Basin Depth and Mineral Exploration
Electrical Resistivity Profiling— Deeper Transient EM and 2D ERT

Geophysics for Geotechnical and Environmental Investigations

Ground-Penetrating Radar
Seismic Reflection for Fault and Geo Hazard Investigations
Seismic Refraction P-Wave and MASW S-Wave Velocity Profiling
Electrical Resistivity Surveys for Groundwater Investigations
Geophysical Evaluation for Earth Structures- Dams and Tunnels



For Free Evaluation of
Geophysical Applications
Please Contact:

Mark Olson
Principal Geophysicist
California PGp, PG, CHG

Mobile Telephone:
(310) 617-8420

Email:
mgolson@
AdvancedGeoscience.com

NORTH AMERICAN EXPLORATION

GEOLOGY • CLAIM STAKING • GEOCHEM SAMPLING • LANDWORK



DAVID MORRIS

PRESIDENT • GEOLOGIST

895 N. MARSHALL WAY, SUITE A
LAYTON, UT 84041

801.546.6453
DMORRIS@NAE-EXPLORATION.COM

THE INDUSTRY STANDARD FOR CORE STORAGE

CORE BOXES
HQ | NQ | PQ
*Setting the industry standard in
core box solutions and reliable service.*

CORE-BLOX
Custom wooden core markers.

NEW COREBOX COVERS
*Protect your investment from the elements.
Ask us about our custom corebox covers.*



HOT-SHOT DELIVERY SERVICES AVAILABLE



Coeur Products

LOCATIONS | SONORA MEXICO | IDAHO | NEVADA

COREBOX.COM

TO ORDER CALL: 208.762.1376



- Claim Staking
- Soil & Rock Sampling
- Geologic Mapping
- Drill Planning & Management
- Core Logging
- Technical Reporting

Contact Us:

sgrocke@globalgeologica.com.au
info@globalgeologica.com.au

+1 440.725.4144
Stephanie Grocke, President

globalgeologica.com.au
Global Geologica
@globalgeologica
Global Geologica

**Global Geologica
USA Services**



**Carlin Trend Mining
Supplies & Service**

369 - 5th Street, Elko, Nevada 89801
775.778.0668 www.carlin-trend.com

Claim Staking - Soil Sampling - Land Research
Core Cutting - Mine Hazard Fencing - Reclamation
Project Management - Geological Consulting
Geology & Drafting Supplies - AutoCad & GIS


Temporary Employees in All Fields
Sister store located in Superior, Arizona
Copper Triangle Mining Services 520-689-5200



Darrell Tweidt
cell: 775-397-0963
darrell@premierdrilling.com

James A. Stephens
cell: 480-200-8300
james@premierdrilling.com

www.premierdrilling.com



**WAYFINDER
DRILLING**

- Lightweight man-portable HYDRACORE diamond drill rigs.
- Access hard-to-reach sites with minimal environmental impact.
- More than 1 million feet drilled across the USA and Mexico.

Nevada Contractor's License: 0092752

Contact: Heather Kidd (604) 629-9427 hkidd@almadexminerals.com
Korm Trieu (604) 629-9426 ktrieu@almadexminerals.com

www.wayfinderdrilling.com



<https://paragongeochem.com/>

**CHRYSOS
PhotonAssay™**
Faster, more accurate gold analysis

UNITED STATES
1555 Industrial Way
Sparks, NV 89431

PARAGON

CANADA
72 Ditton Drive
Hamilton, ON L8W 2E5

101-18780 96th Ave.
Surrey, BC, V4N 3R1

**PARAGON
Geochemical**

GEOLOGICAL SOCIETY OF NEVADA



gsn@gsnv.org • www.gsnv.org
Telephone (775) 323-3500
Fax (775) 323-3599
2175 Raggio Parkway, Room 107
Reno, NV 89512 USA

GSN TRAVELLING BACKPACK PICTURES — SUBMIT YOUR PHOTO TO GSN@GSNV.ORG!



GSN Member Forrest Hopson of Reno, NV sent us this great shot of the backpack relaxing in the courtyard/garden area outside the *La Tour de Cause* Bed & Breakfast in Castelnau-la-Chapelle, France.

Looks like a fun trip, Forrest! Thanks for sharing!

happy new year