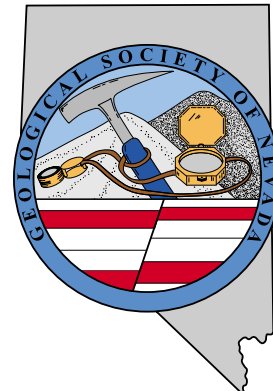


GSN NEWSLETTER



December 2004, Vol. 18, No. 10

PRESIDENT

Dieter Krewedl
Krewedl Mineral Exploration
dkrewedl@usamedia.tv

SECRETARY

Leslie Olmstead
Nevada Contact Inc.
l olmstead@nevadacontact.com

TREASURER

Camille Prens
Mine Development Associates
cami@mda.com

MEMBERSHIP CO-CHAIRS

Greg McN. French
Consulting Geologist
GMcNFrench@aol.com

Dave Shadrick

Rubicon Resources Inc.
Dshadrick@aol.com

PUBLICATION CO-CHAIRS

Elizabeth A. Zbinden
Round Mountain Gold Corp.
E_Zbinden@geology.reno.nv.us

Ruth Carraher

C&M Consultants
RACarraher@aol.com

OFFICE MANAGER

Shannon Fitzpatrick
gsn@mines.unr.edu

CALENDAR OF EVENTS

- Dec. 8th
Wednesday** WINNEMUCCA CHAPTER MEETING: Humboldt Room at the Red Lion at 6 pm. Speaker: Ivan Johnston of Newmont Mining Corp., "Grand Canyon Raft Trip Guided By Prof. Paul Knauth, ASU." Please contact Fred Breit at 775/635-4704 or fbre1@nevada.newmont.com.
- Dec. 14th
Tuesday** AIPG 15th ANNUAL EXPLORATION ROUND-UP MEETING: Holiday Inn, 6th St., Reno, NV. Speakers from 10 companies. Please call Kel Buchanan for reservations at 775/786-4515 or email at summitrk@aol.com. See page 5 for more information.
- Dec. 15th
Wednesday** GSN MEMBERSHIP CHRISTMAS MEETING AND ROCK RAFFLE: Reno Elks Lodge, Reno, NV. Speaker: Jim Gibbons, U.S. House of Representative. Social hour at 6 pm, dinner at 7 pm and talk at 8 pm. This is a popular meeting, so please be sure to make your reservation for dinner ahead of time, the deadline is Tuesday, December 14th, at 5 pm. Contact Shannon Fitzpatrick at 775/323-3500 or gsn@mines.unr.edu.
- Dec. 16th
Thursday** SOUTHERN NEVADA CHAPTER MEETING: Lily Fong Geoscience Building, UNLV, Las Vegas, NV. Speaker: Jean Cline, topic to be announced. Social hour at 5:30, talk at 6:30 pm. Contact Amy Brock at 702/895-3583.
- Jan. 21st
Friday** GSN MEMBERSHIP MEETING: Speaker: Alan Branham, President of Midway Gold Corp., "Midway project, Nye County, NV: High-grade gold under sand dunes." Contact Shannon Fitzpatrick at 775/323-3500 or gsn@mines.unr.edu.

⇒ **If you have not renewed your membership, this could be your last newsletter and you will not receive the 2004-2005 Membership Directory. Membership deadline is December 2004.**

GSN Newsletter is published monthly except June and July
Geological Society of Nevada, PO Box 13375, Reno, NV 89507 USA, 775/323-3500, www.gsnv.org

FROM THE PRESIDENT

Dieter Krewedl, *GSN President 2004-2005*

Hello to everyone and best wishes for a happy and safe holiday season. The recent rise in the gold price, which is at a sixteen year high, certainly will help to make it a prosperous New Year. Let's hope the high commodity prices last for at least the next ten years that Doug Silver predicted.

The November membership meeting was well attended for being held during the middle of the week, and we had a great talk by Bob Leonardson of Barrick on the recent success at the Goldstrike mine. Barrick's management supported the geologists to do good, consistent geological work and then allowed them to test their new ideas on stratigraphic and structural controls. This resulted in the discovery of significant new reserves and has made the Goldstrike mine Barrick's best exploration property for 2004 and 2005. Well done, Bob!

The December Christmas meeting, scheduled for Wednesday, December 15th, is shaping up to be a fun event. The meeting will be highlighted by a presentation from U.S. House of Representative Jim Gibbons, who started his career as a geologist and landman. It will be especially interesting to hear stories about the

Congressman's experiences at Mackay and in the mining industry plus learn how he uses his geologic background as a lawmaker. A big thank you to **Boart Longyear/Lang Exploratory Drilling** for their sponsorship of the Christmas social hour, which will help make this meeting a festive one.

continued on page 2

DECEMBER MEETING SPONSOR



**BOART LONGYEAR/
LANG EXPLORATORY DRILLING**

A division of Boart Longyear Company

2745 W. California Ave., Salt Lake City, UT 84104-4579
(801) 973-6667 • FAX (801) 973-4572

3707 Mazanita Drive Elko, Nevada 89801
(775) 753-8710 • FAX (775) 753-5278



FROM THE PRESIDENT *continued from page 1*

Adding to the festivities during the Christmas meeting will be the annual GSN Foundation rock raffle and silent auction fundraiser with proceeds going to GSN educational projects. The GSN Foundation recently provided a \$2,000 scholarship to Harmony Farnsworth, a senior in hydrology at UNR plus awarded \$6,662 for thirty-seven K-12 earth science field trip grants to schools throughout Nevada.

Also, don't forget to attend the annual AIPG exploration outlook dinner meeting on Tuesday, December 14th. Details of the meeting are provided in Kel Buchanan's announcement in this newsletter. The high gold price should result in companies doing more exploration in Nevada, which will allow many of us to work closer to home.

GSN Foundation December Update

Overview

With approximately \$40,000 in the GSN Foundation Endowment funds, we are well on our way to successfully raising funds necessary to reach the new target goal of \$250,000. According to Connie Howard, we have reportedly had one of the most consistent funding records for scholarships through the UNR Foundation, in excess of \$115,000. This has been occurring annually since the early 1990s, and continues to this day through the Foundation's fundraising efforts, thanks in large part to so many GSN members and contributors.

D.D. LaPointe has been successfully advancing over the past 10 years the K-12 Field Trip Grant program, reaching over 20,000 students and teachers statewide. Some of the funds to support that program are raised during the Annual Foundation Christmas Raffle, coming up at our December meeting. D.D. and her troupe of dedicated helpers are compiling yet another stack of fine items for the raffle.

Financials

The Foundation saw its most sizable donation last year with the donation and sale of the Echo Bay Library that Kinross donated and Newcrest purchased. The proceeds from that were put into the Endowment Account. The AIPG Foundation also gifted \$4,000, earmarked for the K-12 Field Trips, and stipulated that GSN match their gift by 50%, for a total infusion of \$6,000. The Endowment Account now stands at \$39,680, which we are actively seeking to increase. Our goal is to grow the Endowment to the point

that its earnings fund the Field Trip Grants, UNR & UNLV scholarships, Mapping Grants and the DeLaMare Library. We're aiming at \$250,000.

Last year the GSN Executive Committee also voted to match all donations to the Foundation up to the amount of \$250. That amounted to over \$3,000 last year and is well on its way to reach the cap of \$5,000 this year. K-12 Field Trips last year were awarded over \$5,000 and applications were just approved and funded this year for nearly \$6,700. In addition, scholarships were given to UNR and UNLV for a total of \$3,500, which were approved for the Foundation's budget this year as well.

All donations are gratefully accepted and applied to one of the Restricted Accounts (Endowment, Mapping Grants, K-12 Field Trips, DeLaMare Library), if designated by the donor, or to the Unrestricted Account, if not specified. In addition to the Endowment Account total, our Unrestricted Account has a balance of nearly \$10,000.

Have a happy holiday and see you all at the December Christmas Meeting.

Ann Carpenter, GSN Foundation Chairman

Cami Prens, Foundation Director and Treasurer

GSN Rock Raffle and Silent Auction

Attention GSN Members! It's time to start thinking about items for the GSN Rock Raffle and Silent Auction. The annual Geological Society of Nevada Foundation fundraiser will once again be held during the Christmas meeting. We are seeking donation of any items suitable for raffle – gift baskets, attractive rock or mineral samples, gems or gemstones, jewelry, wine or other spirits, logo items, geological equipment or publications, commemorative coins, plus that something special for the silent auction. The raffle proceeds will be applied to the GSN Foundation's unrestricted fund to benefit GSN's educational projects which include grants to Nevada K-12 classes for transportation on earth science related field trips, scholarships to UNR and UNLV geology students, grants to the UNR DeLaMare Library, and grants for geologic mapping in Nevada. Please send donated items to D.D. LaPointe at the following address to arrive before the December meeting date, or call to arrange pick-up of donated items if you are in the Reno-Sparks-Carson City area.

Thank you! D.D. LaPointe, GSN Educational Committee Co-Chair and GSN Foundation Trustee, Nevada Bureau of Mines and Geology/MS178, UNR, Reno, NV, 89557-0088, phone: 775/784-6691, ext. 134, fax: 775/784-1709, e-mail: dlapoint@unr.edu.

***Thanks to Ruen Drilling Inc. and WDC Exploration
for hosting the November meeting.***

GSN November 10, 2004 Membership Meeting

Date: Wednesday, December 15, 2004

Time: Social-6:00, Dinner-7:00 (\$20), Meeting-8:00

Reservations: 775/323-3500; fax 323-3599,
e-mail gsn@mines.unr.edu

Deadline: Reserve by 5 pm Tuesday, December 14th

Location: Elks Lodge, 597 Kumle Lane, Reno, NV

Directions: Across (W) from the Reno-Sparks Convention Center (S Virginia St), behind the Les Schwab Tire Center

Speaker/topic: Jim Gibbons, U.S. House of Representative.

GEOLOGICAL SOCIETY OF NEVADA MEMBERSHIP DIRECTORY ADVERTISING

Advertise your business, products, or services in the 2004-2005 GSN Membership Directory "Gold Pages". Due for distribution in January 2005. A complimentary copy of the directory will be provided to you.

THE FOLLOWING ADVERTISING SPACE SIZES ARE AVAILABLE:

2" x 3 1/2"	(Business Card - Horizontal Format)	\$ 50.00 (see below)
3 1/2" x 5"	(Quarter Page - Vertical Format)	150.00 (see below)
5" x 7"	(Half Page - Horizontal)	200.00
3 1/2" x 10"	(Half Page - Vertical)	200.00
7" x 10"	(Full Page - Vertical Format)	400.00
7" x 10"	(Inside Front Cover - Vertical Format)	750.00
7" x 10"	(Opposite, Inside Back Cover - Vertical Format)	550.00
7" x 10"	(Inside Back Cover - Vertical Format)	650.00
7" x 10"	(Outside Back Cover - Vertical Format)	850.00

All advertisements must be camera ready, black and white or submitted as PDF, EPS, BIT, TIFF, or PICT digital format on 3.5" floppy diskettes, CD, or e-mailed to the GSN office. Please send your advertisement and check (payable to Geological Society of Nevada) by December 18, 2005.

The GSN Foundation wishes to thank the following donors:

William Wulftange

Jose Portacio, Jr.

Steve Green

Eric Seedorf

D.D. LaPointe

Sandra Powers

Marilyn Miller

Mark Vollmer

James Bikun

Bill Feyerabend

Pamela Zohar

John Lucas

Joe Kizis

John Lee Carroll

Ted Jochems

Bob Forest

Ed Mackevett, Jr.

Karl Marlowe

Tom Kilbey

Elizabeth Zbinden

Bert Jeffries

Steve Barnwell

John Prochnau

Ken Ainsworth

Howard Shafer

Li Hsu

Deb & Eric Struhsacker



*Merry Christmas
to our GSN members and friends*

ACTIVITY UPDATE

Mike Brady, October 2004
www.activityupdate.com

NEVADA

Metallic Ventures Gold Inc. announced that based on recent drill results at the Converse Project, resources aggregate 262,350,000 tons @ 0.015 opt Au measured+indicated and 34,870,000 tons @ 0.014 opt Au inferred. (was 82,125,000 tons @ 0.024 opt Au)

N.M.: October 1

Metallic Ventures Gold Inc. announced that it placed the Esmeralda Mine on care-and-maintenance since it is behind schedule in achieving full production levels. (resource = 192,132 tons @ 0.410 opt Au) N.M.: October 1

Quadra Mining Corp. announced that it began mining and milling operations at the Robinson Mine at a rate of 25,000 tons/day of ore. (reserve = 115,060,000 tons @ 0.72% Cu, 0.008 opt Au proven+probable)

N.M.: September 17

Newmont Mining Corp. announced that it acquired an option to earn a 60% interest in the Red Canyon Property from Miranda Gold Corp. for \$30,000 cash and \$2,500,000 in exploration expenditures over 5 years.

Press Release: October 19

Queenstake Resources Ltd. announced that recent underground drill results at the Smith Mine include 0-20 feet @ 0.563 opt Au (6790-B4); 0-10 feet @ 0.307 opt Au (6790-B5); 0-20 feet @ 0.321 opt Au (6790-B6) and 200-225 feet @ 0.263 opt Au (LX-486). (reserve @ Jerritt Canyon = 2,563,000 tons @ 0.303 opt Au proven+probable)

Press Release: September 27

Queenstake Resources Ltd. announced that recent underground drill results at the Mahala Project include 0-15 feet @ 0.387 opt Au (LX-489); 0-10 feet @ 0.296 opt Au (LX-490); 0-15 feet @ 0.295 opt Au (LX-492) and 0-15 feet @ 0.412 opt Au (LX-502). (reserve @ Jerritt Canyon = 2,563,000 tons @ 0.303 opt Au proven+probable)

Press Release: September 27

Queenstake Resources Ltd. announced that recent underground drill results at the Steer Mine include 85-145 feet @ 0.329 opt Au (E1); 145-165 feet @ 0.260 opt Au (E2); 200-235 feet @ 0.285 opt Au (F2); 20-40 feet @ 0.304 opt Au (Q1) and 15-45 feet @ 0.307 opt Au (P3). (reserve @ Jerritt Canyon = 2,563,000 tons @ 0.303 opt Au proven+probable)

Press Release: September 27

Queenstake Resources Ltd. announced that recent drill results at the Murray Mine include 110-125 feet @ 0.769 opt Au (NC-54); 575-620 feet @ 0.511 opt Au (MR-85A); 610-620 feet @ 0.566 opt Au (MR-092); 570-575 feet @ 0.666 opt Au (MR-093); 605-630 feet @ 0.315 opt Au (MR-

076C) and 565-570 feet @ 0.270 opt Au (MR-077C). (reserve @ Jerritt Canyon = 2,563,000 tons @ 0.303 opt Au proven+probable) Press Release: September 27

Midway Gold Corp. and Nevada Western Gold Corp. announced that they have terminated their merger discussions. P.D.: September 2004

2005 MINING AND LAND RESOURCES INSTITUTE

The Nevada Landmen's Association (NLA) and American Association of Professional Landmen (AAPL) invite you to attend the 2005 Mining and Land Resources Institute. MALRI 2005 will be held on March 17-18, 2005 at the Peppermill Hotel in Reno, Nevada. Topics include mining law updates and reviews of current land and environmental issues. For more information, contact Edd Jackson, the MALRI 2005 Co-Chairman at Newmont Capital Limited. Edd can be reached at edd.jackson@newmont.com or call 775/784-8188.

GSN 2005 Symposium



“Window to the World”

How time flies! It is now less than six months to the 2005 Symposium. If you wish to attend any of the Field Trips or Short Courses or be an Exhibitor at this world-class meeting, it is important that you register soon. As you know the Field Trips will fill up quickly and the Short Courses will be in demand. With the current increase in gold exploration we expect a record turnout for this meeting. This is an excellent opportunity for Exhibitors to display their services and products. Booths are still available at this time, but do not delay since there is a limit and there will be a price increase January 1, 2005. If you would like to participate in the peer review of the quality papers that are being submitted, contact Brenda at the Symposium office, 775/355-8388. The Symposium office is located at the Gold Summit office on Caughlin Ranch Parkway. To register for the Symposium, Exhibits, Short Courses and Field Trips, please go to the Symposium Website – www.gsn2005.org. A GSN Symposium only happens once every five years – Don't Miss Out!

GSN'S 16th Annual Family Picnic



You came, you ate, you drank, and you played games involving traffic cones, pink hula-hoops, hammers, gold pans, and nearly indestructible eggs. I hope that you all enjoyed the 2004 GSN Picnic at Rancho San Rafael as much as I did. Special thanks go to Steve Castor for taking care of our carnivorous needs, to Cami Prenn who provided the highly appropriate "Oktoberfest" beer, and to everyone who brought tasty side dishes and desserts. We had a great turnout with over 40 people of all ages! Participation in the games was at one of the highest levels ever, and the competition was tough. The following is a list of winners:



	Gold Pan Toss	Hammer Throw	3-Legged Race	Sack Race Adults	Egg Toss
1 st	Alex Ruud	Jimmy Cwik	Jimmy Cwik/Laura Ruud	Steve Carroll	Brian Park-Li/Stacey Pedersen
2 nd	Dieter Krewedl	Jerry Baughman	Alex & Erica Ruud	Dieter Krewedl	Rachel Dolbier/Steve Carroll
3 rd	Greg French	Dieter Krewedl	April Barber & Jasmine		Laura Ruud/Dieter Krewedl

Once again, thanks to all who came to the 2004 Picnic and I hope to see the rest of you in 2005.

Rachel Dolbier

AIPG EXPLORATION OUTLOOK DINNER MEETING

This year's AIPG Exploration Outlook Dinner Meeting is scheduled for Tuesday, December 14th at the Holiday Inn Skyroom, 14th Floor, 6th Street in Reno. This is the fifteenth year that the Outlook dinner has taken place and every year since our first meeting in 1990 at the old Holiday Hotel (now the Siena), **Eklund Drilling** has sponsored the dinner, wine, and cocktails. This year Lance is also sponsoring dinners for students. We are indebted to Eklund drilling for their continuing generosity.

- Date:** Tuesday, December 14, 2004
- Place:** Holiday Inn, 14th floor (Skyroom), 6th Street, Reno
- Time:** 6:00 PM Hosted Cocktails
7:00 PM Dinner
8:00 PM Program
- Cost:** AIPG & GSN: \$30.00, others \$35.00
- Door Prizes:** Three mineral specimens, donated by Mark Stock, Global Hydrologic Services, Inc., will be drawn during the course of the dinner. Please bring your business cards so that you can enter. This is a tradition and we are grateful to Mark for providing these quality specimens.
- Speakers:** Mark Abrams, Agnico-Eagle: Bill Stanley, Atna Resources: Ed Cope, Barrick: Gaylord Cleveland, Centerra: Ken Cunningham, Miranda Gold: Curt Everson, Nevada Pacific: Leroy Schutz, Newmont: Greg Cox, Placer Dome: Ted Wilton, Queenstake.

Each speaker will have 5-10 minutes to discuss the 2005 plans and budgets of their various companies. Screens, overheads and power point may be used by speakers.

Please contact Kel Buchanan, HB Engineering, for reservations at summitcrk@aol.com or phone 786-4515, fax 786-4324.

PAID ADVERTISEMENTS

Sample Bags

HUGE INVENTORY  LOW, LOW PRICES

Legend, Inc.

140 Manuel • Reno, Nevada 89502 • 775-786-3003
www.legend-reno.com

Petrographic and Ore Microscopy Services

for applications in the following areas:

- Base and Precious Metals
- Mineral Exploration
- Process Mineralogy
- Industrial Minerals
- Geological Mapping
- Forensic Geology



P.O. Box 10080
American Canyon, CA 94503
Phone: 707-553-2772
E-Mail: sfmicro@earthlink.net

Schurer & Fuchs

Edward Jones

Kent S. Samuelson

Investment Representative

18116 Wedge Parkway
Reno, NV 89511
Bus. 775-852-0909 Toll-free fax 888-690-9171
Toll-free 888-461-3214
www.edwardjones.com

Serving Individual Investors Since 1871

Qualified Person (QP) Listing

The 2004-2005 Directory will include a page listing those members that are qualified persons (QP). Those who wish to be listed should contact Shannon at the GSN office (775/323-3500 or gsn@mines.unr.edu).

ATTENTION ALL YOU PUBLICATION LOVERS!!!

Do you have the last two Field Trip Guidebooks? The GSN would be happy to sell them to you. These guidebooks, along with the other publications produced by the GSN, are available for purchase. A list of publications can be found online at www.gsnv.org. This list can be filled out and faxed, mailed or hand carried into the GSN office. Check your libraries. If you are missing any publications, call the GSN office and Shannon will be happy to help you with your orders.

SP 39

Gold Deposits of the Independence Mountains, Elko Co., Nevada. Jerritt Canyon and Big Springs Districts (sub-title), 189p. plus 29 page insert, total 218 p. (2004). \$45.

SP 40

New Discoveries, Exploration and Mining Activities along the Central and Southern Battle Mountain – Eureka Trend, Lander and Eureka Counties, Nevada. (2004). \$45.

UPCOMING EVENTS

Dec. 6-10th - NORTHWEST MINING ASSOCIATION: Exploration, Operations & Reclamation-Keys to a Vibrant Mineral Industry. Pat Heywood at phaywood@nwma.org.

Jan 24th-27th - BCYCM-MINERAL EXPLORATION ROUNDUP 2005, Vancouver, BC. www.chamberofmines.bc.ca/eventcalendar.

Feb. 18th - GSN MEMBERSHIP MEETING: Speaker: Scott Manske, "How to shoot an elephant: A brief history of exploration and discovery in the Superior District, AZ." 775/323-3500 or gsn@mines.unr.edu.

Feb. 28th-Mar. 2nd - SOC FOR MINING METALLURGY, & EXPL (SME) 2005 MEETING, Salt Lake City, UT. www.smenet.org/meetings/AnnualMeeting2005/index.cfm.

Mar. 6th-9th - PROSPECTORS AND DEVELOPERS ASSOCIATION OF CANADA (PDAC) 2005, Toronto, Canada. www.pdac.ca/pdac/misc/conv-info.html.

In Memory

The GSN regrets to inform its members of the death of *Walter Schull, Dick Beane, and LaVerne Forest.*

Members are encouraged to keep us informed about their own career related changes and awards, and deaths of GSN colleagues. We can be reached by mail, fax, or e-mail (gsn@mines.unr.edu).

Jo Beth Allen
Professional Graphics

CAD Drafting/Digitizing/Scanning
High Resolution Presentation Graphics
Plotting/Printing
Geologist

1055 Joshua Drive Phone: 775-324-7960
Reno, Nevada 89509 Fax: 775-324-7583
jobeth@yellowsb.net



**Carlin Trend Mining
Supplies & Service**

369 5th St., Elko, NV 89801
(775) 778-0668, Fax: (775) 778-0687, carlntrend@frontiernet.net

Geological Consulting - Claim Staking - Soil Sampling
Mineral Surveys - Mine Hazard Fencing
Geology & Drafting Supplies - AutoCad & GIS
Temporary Employees in All Fields

Fire Assay
ICP - OES
ICP - MS
AAS
Custom Preparation
Bullion Analyses
BLEG

Corporate Office
1500 Glendale Avenue
Sparks, NV U.S.A. 89431-5902
Telephone (775) 356-0606
Fax (775) 356-1413

Elko Office
2320 Last Chance Road
Elko, NV U.S.A. 89801-4852
Telephone/Fax (775) 738-9100

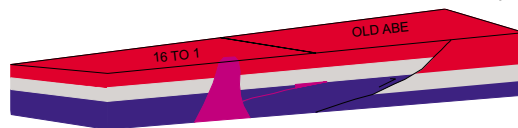
E-mail: AALADMIN@aallabs.net
Website: www.aallabs.com

**American
Assay &
Environmental
Laboratories**



G.I.S. Land Services

Greg Ekins M.S. R.L.P. #32306 President
Mineral Landman - Computer Draftsman
"From Courthouse Records to Final Map"



Surface Title
Mineral Title

AutoCad - ArcView - Mapinfo
Geologic, GeoChem and Land Status Maps
www.gislandservices.com

E: greg@gislandservices.com
P: 775-746-8803 F: 775-746-8802

6635 Broadridge Ct.
Reno, NV 89523

MINERAL EXPLORATION SERVICES

**SOIL SAMPLING
CLAIMSTAKING
PROPERTY EVALUATION
MINE HAZARD FENCING**

5655 Riggins Ct., #15, Reno, NV 89502
Tel: (775) 954-1082 Fax: (775) 829-6882
email: day@mineralexploration.com

WE CAN HELP!

- Environmental and exploration support services
- Celebrating 40 years of service to the mining industry
- Experience in Mexico / Canada / Alaska



NORTH AMERICAN EXPLORATION INC.
NORTH AMERICAN MINE SERVICES INC.
GEOLOGY | GEOPHYSICS | GEOCHEMISTRY
HYDROLOGY | ENVIRONMENTAL SERVICES

472 North Main • Kaysville, Utah 84037 • Phone (801) 546-6453 Fax (801) 546-0884
nae@nae-xploration.com



Enviroscientists, Inc.

Reliable Service for All Your Environmental Needs

4600 Kietzke Lane, Suite C129, Reno, Nevada 89502
Phone: (775) 826-8822 Fax: (775) 826-8857

Richard DeLong
President

www.enviroincus.com

Opal Adams
Vice President

ALS Chemex

*The World's Leading Mineral Exploration
& Minesite Laboratory Group for over 37 Years*

Wherever you are, we offer . . .
complete Lab Set Up & Mineral Analysis

**Over 40 laboratories & offices in North &
South America, Africa & S.E. Asia**



Reno
Tel: 775-356-5395
Fax: 775-355-0179

Elko
775-738-2054
775-738-1728

Fairbanks
907-452-2188
907-452-2227

GEOLOGICAL SOCIETY OF NEVADA



gsn@mines.unr.edu • www.gsnv.org
Telephone (775) 323-3500 FAX (775) 323-3599
Post Office Box 13375
Reno NV 89507
USA

NON PROFIT
ORGANIZATION
U.S. POSTAGE
PAID
RENO, NV
PERMIT NO. 625



Inspectorate America Corporation

840 Greg Street, Sparks, Nevada 89431
Tel: (775) 359-6311, Fax: (775) 361-6203 • m&m.info@inspectorate.com

Mineral Exploration Analytical Services

Inspectorate manages an extensive global network of laboratory & sample preparation facilities in strategic locations around the world, providing expert, reliable and independent laboratory analytical services to all sectors of industry, commerce and government. We have both the technology and expertise to provide comprehensive materials testing on your behalf, utilizing methodologies ranging from traditional chemistry to those cutting edge techniques at the forefront of today's discoveries. For more information on our mineral exploration services, please visit our website at:

WWW.INSPECTORATE.COM



Our Metal and Minerals Laboratories operate under the ISO guidelines set for quality management. Testing Services are certified each year by the ABS Quality Evaluations, Inc., in compliance with the ISO-9002:1994 Quality Standards.

A member of the BSi Inspectorate Group of Companies
ISO 9002: Certification No. 37295